

DEMO PLAN - GROUND LEVEL  
1/16" = 1'-0"

GENERAL NOTES - DEMOLITION

- DEMOLITION PLAN KEYNOTES APPLY TO SHEETS D100-D103. ALL KEYNOTES MAY NOT OCCUR ON THIS SHEET AND DO NOT APPLY TO OTHER SHEETS EXCEPT THOSE NOTED.
- GRIDS ARE FOR REFERENCE ONLY. CONTRACTOR TO SET CONTROL POINTS FOR LAYOUT.
- PACKAGE 4 DEMOLITION - SALVAGE ALL FEASIBLE MATERIALS FOR OFF-SITE REUSE OR RECYCLING. SEE DIVISION 1 SPECIFICATIONS. SALVAGE FOR ON-SITE REUSE: INTERIOR GULLIAM RAILINGS, WOOD CEILING ELEMENTS, ROOF HATCH, STONE COPING, LIMESTONE BASE, AND BOOKSHELVES AS INDICATED IN DEMOLITION DRAWINGS.
- REFER TO A300 SERIES FOR DEMOLITION/SALVAGE SCOPE AT ELEVATIONS.
- REFER TO SLAB PLANS FOR NEW OPENINGS IN (E) SLABROOFS.
- REFER TO DETAIL TABS2 AND SPECIFICATIONS 06 15 00 1.04 FOR PENETRATIONS THROUGH CONCRETE SLAB OVER WOOD DECKING.
- DIMENSIONS FOR NEW OPENINGS ARE FOR REFERENCE ONLY. CONTRACTOR TO VERIFY REQUIRED DIMENSIONS WITH FINAL INSTALLATION REQUIREMENTS.

LEGEND - DEMO PLAN AND SECTIONS

- EXISTING TO REMAIN  
DEMOLISH

KEYNOTES - DEMO PLANS

- CUT FLOOR OPENING
- REMOVE, PROTECT AND STORE (E) ROOF HATCH FOR REINSTALLATION
- EXISTING TO REMAIN, LINO
- PROTECT HISTORIC ELEMENT
- REMOVE ALL CLADDING MATERIALS AND CONCRETE BASE FROM (E) COLUMNS. LEAVE SURFACE ROUGH FOR NEW CLADDING
- REMOVE PAVING
- REMOVE FLOOR FINISH
- CUT NEW OPENING. SEE STRUCTURAL
- REMOVE CEILING MATERIAL AND LIGHTING
- REMOVE EXISTING STOREFRONT AND CURB
- REMOVE (E) WINDOW AND COVERING
- REMOVE (E) RAMP
- REMOVE STAIRS
- REMOVE WINDOW ASSEMBLY AND CUT OPENING TO GRADE. SEE ELEVATIONS, A300 SERIES
- REMOVE WINDOW ASSEMBLY. SEE ELEVATIONS, A300 SERIES
- REMOVE WINDOW SASHES
- REMOVE TOPPING SLAB
- REMOVE ELEVATOR
- REMOVE HALL AND GLAZED OPENING(S)
- REMOVE SLAB ON GRADE
- NO WORK REQUIRED
- REMOVE CONCRETE ROOF ASSEMBLY TO STRUCTURAL SLAB. DEMO ROOF DRAINS
- REMOVE COPPER ROOFING ASSEMBLY, GUTTERS, AND PLASTER SOFFIT BELOW. REMOVE TO PRIMARY STRUCTURE. DEMOLISH LIGHTING
- REMOVE ACCESS LADDER
- REMOVE (E) ROOF ASSEMBLY (MEMBRANE, INSULATION, ACCESSORY FLASHINGS, AND ROOF DRAINS
- REMOVE ROOF AND STRUCTURE
- SPALLING PAINT, FIBER PAINT AND SOME CRACKING AT CONCRETE CANOPY
- REMOVE (E) ASPHALTIC WATERPROOFING MEMBRANE AT (E) CONCRETE CANOPY
- REMOVE (E) ROOF ASSEMBLY, DEMO ROOF AND DOORHOUSE STRUCTURE TO PROVIDE ACCESS FOR NEW MECHANICAL EQUIPMENT
- REMOVE, PROTECT AND STORE (E) STONE COPING FOR REINSTALLATION
- REMOVE (E) MECHANICAL EQUIPMENT AND CURB. REF. MECHANICAL
- REMOVE AND SALVAGE EXISTING WOOD PANELS AND TRIM FOR REPLACEMENT
- REMOVE ROOF DRAIN AT THIS LEVEL. REF. PLUMBING
- REMOVE (E) GRASS HOOD
- REMOVE MOSAIC TILE. PRESERVE (E) STONE SUBSTRATE
- REMOVE (E) BOOKSHELVES AND SALVAGE FOR RE-INSTALLATION
- REMOVE COUNTERTOP
- REMOVE OPERABLE PARTITION, TRACK AND COVER DOORS
- REMOVE (E) ROLL-UP DOOR AND SALVAGE FOR RE-INSTALLATION
- REMOVE (E) GUTTER AND DOWNSPOUT
- REMOVE INTERIOR CONVECTOR PIPE CHASE BELOW GUTTER
- ALIGN
- PROTECT (E) LIMESTONE BASE. SALVAGE ANY REMOVED
- REMOVE EXISTING DOORS AND FRAME STOPS. LEAVE TRIM
- SAWCUT AND BACKFILL (E) CONCRETE FOR ELECTRICAL CONDUIT. ALIGN CUTS WITH (E) JOINTS
- REMOVE PLASTER WARP AT COLUMN/BEAM
- REMOVE (E) PLASTER FOR PLUMBING ACCESS AND ADDED BLOCKING
- (E) COPING TO REMAIN IN PLACE
- (E) FALL PROTECTION SYSTEM TO REMAIN IN PLACE
- MAINTAIN FOOTINGS AS REQUIRED TO SUPPORT HISTORIC ENTRY ABOVE
- REMOVE HISTORIC DOORS AND FRAMES. SALVAGE FOR OWNER
- CUT NEW WALL OPENING ALIGNED ABOVE DOOR/WINDOW OPENING. SEE MEP DRAWINGS
- REMOVE (E) DISPLAY CASE
- REMOVE FURRING WALL AND CONVECTOR UNITS
- REMOVE PLATFORM AND LADDER. SALVAGE FOR REPLACEMENT OR REPLACE IN KIND
- 



ARCHITECTURE  
URBAN DESIGN + PLANNING  
INTERIOR DESIGN

PORTLAND, OREGON 97209  
P: 503.445.7372  
F: 503.445.7395  
SEBAPDX.COM



ERB MEMORIAL UNION - RENOVATION & ADDITION  
PACKAGE 4

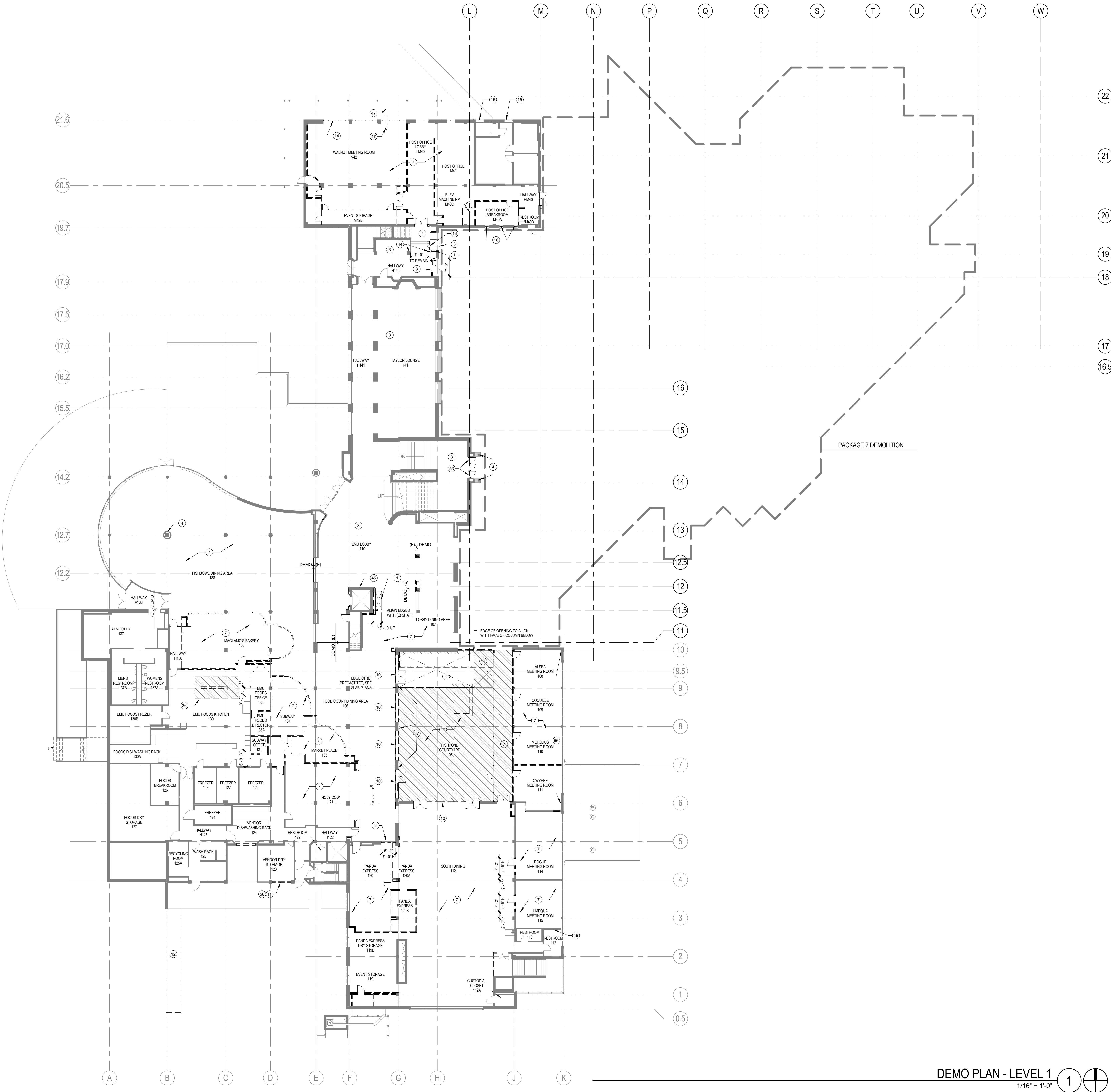
UNIVERSITY OF OREGON  
13TH AVENUE & UNIVERSITY STREET

REVISIONS

CHECKED BY:  
ISSUE DATE: 2014.08.01  
PROJECT NO.: 11045

DEMO PLAN -  
GROUND LEVEL

DA100



GENERAL NOTES - DEMOLITION

- A. DEMOLITION PLAN KEYNOTES APPLY TO SHEETS D100.0001. ALL KEYNOTES MAY NOT OCCUR ON THIS SHEET AND DO NOT APPLY TO ANY OTHER SHEETS EXCEPT THOSE NOTED.
- B. GRIDS ARE FOR REFERENCE ONLY. CONTRACTOR TO SET CONTROL POINTS FOR LAYOUT.
- C. PACKAGE 4 DEMOLITION - SALVAGE ALL FEASIBLE MATERIALS FOR OFF-SITE REUSE OR RECYCLING. SEE DIVISION 1 SPECIFICATIONS. SALVAGE FOR ON-SITE REUSE: INTERIOR GLULAM RAILINGS, WOOD CEILING ELEMENTS, ROOF HATCH, STONE COPING, LIMESTONE BASE, AND BOOKSHELVES AS INDICATED IN DEMOLITION DRAWINGS.
- D. REFER TO A300 SERIES FOR DEMOLITIONSALVAGE SCOPE AT ELEVATIONS.
- E. REFER TO SLAB PLANS FOR NEW OPENINGS IN (E) SLABROOFS.
- F. REFER TO DETAIL 718B2 AND SPECIFICATIONS 06 15 00 1.04 FOR PENETRATIONS THROUGH CONCRETE SLAB OVER WOOD DECKING.
- G. DIMENSIONS FOR NEW OPENINGS ARE FOR REFERENCE ONLY. CONTRACTOR TO VERIFY REQUIRED DIMENSIONS WITH FINAL INSTALLATION REQUIREMENTS.

LEGEND - DEMO PLAN AND SECTIONS

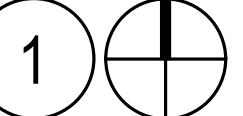
- EXISTING TO REMAIN
- DEMOLISH

KEYNOTES - DEMO PLANS

- 1. OUT FLOOR OPENING
- 2. REMOVE, PROTECT AND STORE (E) ROOF HATCH FOR REINSTALLATION
- 3. EXISTING TO REMAIN, UNDO
- 4. PROTECT HISTORIC ELEMENT
- 5. REMOVE ALL CLADDING MATERIALS AND CONCRETE BASE FROM (E) COLUMNS, LEAVE SURFACE ROUGH FOR NEW CLADDING
- 6. REMOVE PAVING
- 7. REMOVE FLOOR FINISH
- 8. OUT NEW OPENING, SEE STRUCTURAL
- 9. REMOVE CEILING MATERIAL AND LIGHTING
- 10. REMOVE EXISTING STONEFRONT AND CURB
- 11. REMOVE (E) WINDOW AND COVERING
- 12. REMOVE (E) RAMP
- 13. REMOVE STAIRS
- 14. REMOVE WINDOW ASSEMBLY AND CUT OPENING TO GRADE. SEE ELEVATIONS, A300 SERIES
- 15. REMOVE WINDOW ASSEMBLY, SEE ELEVATIONS, A300 SERIES
- 16. REMOVE WINDOW SASHES
- 17. REMOVE TOPPING SLAB
- 18. REMOVE ELEVATOR
- 19. REMOVE WALL AND GLAZED OPENING(S)
- 20. REMOVE SLAB ON GRADE
- 21. NO WORK REQUIRED
- 22. REMOVE CONCRETE ROOF ASSEMBLY TO STRUCTURAL SLAB, DEMO ROOF DRAINS
- 23. REMOVE COPPER ROOFING ASSEMBLY, GUTTERS, AND PLASTER SOFFIT BELOW, REMOVE TO PRIMARY STRUCTURE, DEMOLISH LIGHTING
- 24. REMOVE ACCESS LADDERS
- 25. REMOVE (E) ROOF ASSEMBLY (MEMBRANE, INSULATION, ACCESSORY FLASHINGS, AND ROOF DRAINS
- 26. REMOVE ROOF AND STRUCTURE
- 27. SPALLING PAINT, FADED PAINT AND SOME CRACKING AT CONCRETE CANOPY
- 28. REMOVE (E) ASPHALTIC WATERPROOFING MEMBRANE AT (E) CONCRETE CANOPY
- 29. REMOVE (E) ROOF ASSEMBLY, DEMO ROOF AND DOORHOUSE STRUCTURE TO PROVIDE ACCESS FOR NEW MECHANICAL EQUIPMENT
- 30. REMOVE, PROTECT AND STORE (E) STONE COPING FOR REINSTALLATION
- 31. REMOVE (E) MECHANICAL EQUIPMENT AND CURB, REE MECHANICAL
- 32. REMOVE AND SALVAGE EXISTING WOOD PANELS AND TRIM FOR REPLACEMENT
- 33. REMOVE ROOF DRAIN AT THIS LEVEL, REF PLUMBING
- 34. REMOVE (E) GREASE HOOD
- 35. REMOVE MOSAIC TILE (PRESERVE (E) STONE SUBSTRATE
- 36. REMOVE (E) BOOKSHELVES AND SALVAGE FOR RE-INSTALLATION
- 37. REMOVE CATHWAY
- 38. REMOVE OPERABLE PARTITION, TRACK AND COVER DOORS
- 39. REMOVE (E) ROLL-UP DOOR AND SALVAGE FOR RE-INSTALLATION
- 40. REMOVE (E) GUTTER AND DOWNSPOUT
- 41. REMOVE INTERIOR CONNECTOR PIPE CHASE BELOW GUTTER
- 42. ALIGN
- 43. PROTECT (E) LIMESTONE BASE, SALVAGE ANY REMOVED
- 44. REMOVE EXISTING DOORS AND FRAME STOPS, LEAVE TRIM
- 45. SAWCUT AND BACKFILL (E) CONCRETE FOR ELECTRICAL CONDUIT, ALIGN CUTS WITH (E) JOINTS
- 46. REMOVE PLASTER WRAP AT COLUMN/BEAM
- 47. REMOVE (E) PLASTER FOR PLUMBING ACCESS AND ADDED BLOCKING
- 48. (E) COPING TO REMAIN IN PLACE
- 49. (E) FALL PROTECTION SYSTEM TO REMAIN IN PLACE
- 50. MAINTAIN FOOTINGS AS REQUIRED TO SUPPORT HISTORIC ENTRY ABOVE
- 51. REMOVE HISTORIC DOORS AND FRAMES, SALVAGE FOR OWNER
- 52. OUT NEW WALL OPENING ALIGNED ABOVE DOOR/WINDOW OPENING, SEE MEP DRAWINGS
- 53. REMOVE (E) DISPLAY CASE
- 54. REMOVE FURNISHING WALL AND CONNECTOR UNITS
- 55. REMOVE PLATFORM AND LADDER, SALVAGE FOR REPLACEMENT OR REPLACE IN KIND
- 56.
- 57.
- 58.

DEMO PLAN - LEVEL 1

1/16" = 1'-0"



ERB MEMORIAL UNION - RENOVATION & ADDITION  
PACKAGE 4

UNIVERSITY OF OREGON  
13TH AVENUE & UNIVERSITY STREET

REVISIONS

CHECKED BY:  
ISSUE DATE: 2014.08.01  
PROJECT NO.: 11045

DEMO PLAN -  
LEVEL 1

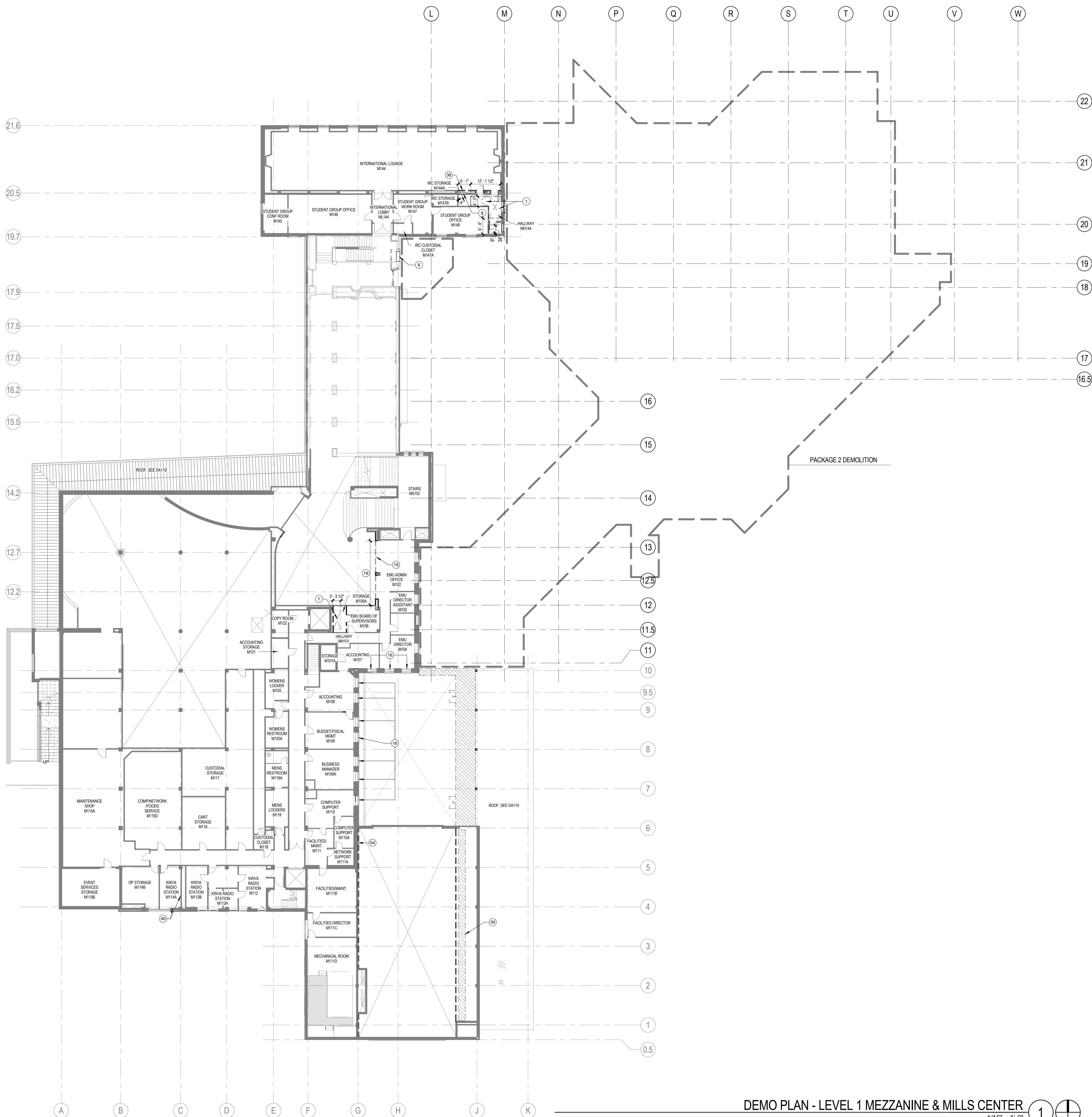
DA101

SEBA

ARCHITECTURE  
URBAN DESIGN + PLANNING  
INTERIOR DESIGN

PORTLAND, OREGON 97209  
P: 503.445.7372  
F: 503.445.7385  
SERAPDX.COM

REGISTERED ARCHITECT  
DONALD D. EGGLESTON  
PORTLAND, OREGON  
STATE OF OREGON



DEMO PLAN - LEVEL 1 MEZZANINE & MILLS CENTER

1/16" = 1'-0"

GENERAL NOTES - DEMOLITION

- A. DEMOLITION PLAN KEYNOTES APPLY TO SHEETS D100-2000. ALL KEYNOTES MAY NOT OCCUR ON THIS SHEET AND DO NOT APPLY TO ANY OTHER SHEETS EXCEPT THOSE NOTED.
- B. GRIDS ARE FOR REFERENCE ONLY. CONTRACTOR TO SET CONTROL POINTS FOR LAYOUT.
- C. PACKAGE 4 DEMOLITION - SALVAGE ALL FEASIBLE MATERIALS FOR OFF-SITE REUSE OR RECYCLING. SEE DIVISION 1 SPECIFICATIONS. SALVAGE FOR ON-SITE REUSE: INTERIOR GLULAM RAILINGS, WOOD CEILING ELEMENTS, ROOF HATCH, STONE COPING, LIMESTONE BASE, AND DOORSHIMS VES AS INDICATED IN DEMOLITION DRAWINGS.
- D. REFER TO A320 SERIES FOR DEMOLITION/SALVAGE SCOPE AT ELEVATIONS.
- E. REFER TO SLAB PLANS FOR NEW OPENINGS IN (E) SLAB ROOFS.
- F. REFER TO DETAIL TABS2 AND SPECIFICATIONS 08 15 01 1.04 FOR PENETRATIONS THROUGH CONCRETE SLAB OVER WOOD DECKING.
- G. DIMENSIONS FOR NEW OPENINGS ARE FOR REFERENCE ONLY. CONTRACTOR TO VERIFY REQUIRED DIMENSIONS WITH FINAL INSTALLATION REQUIREMENTS.

LEGEND - DEMO PLAN AND SECTIONS

- EXISTING TO REMAIN
- DEMOLISH

KEYNOTES - DEMO PLANS

- 1. CUT FLOOR OPENING
- 2. REMOVE, PROTECT AND STORE (E) ROOF HATCH FOR REINSTALLATION
- 3. EXISTING TO REMAIN, UNO
- 4. PROTECT HISTORIC ELEMENT
- 5. REMOVE ALL CLADDING MATERIALS AND CONCRETE BASE FROM (E) COLUMNS. LEAVE SURFACE ROUGH FOR NEW CLADDING
- 6. REMOVE PAVING
- 7. REMOVE FLOOR FINISH
- 8. CUT NEW OPENING. SEE STRUCTURAL
- 9. REMOVE CEILING MATERIAL AND LIGHTING
- 10. REMOVE EXISTING STOREFRONT AND CURB
- 11. REMOVE (E) WINDOW AND COVERING
- 12. REMOVE (E) RAMP
- 13. REMOVE STAIRS
- 14. REMOVE WINDOW ASSEMBLY AND CUT OPENING TO GRADE. SEE ELEVATIONS, A320 SERIES
- 15. REMOVE WINDOW ASSEMBLY. SEE ELEVATIONS, A320 SERIES
- 16. REMOVE WINDOW SASHES
- 17. REMOVE TOPPING SLAB
- 18. REMOVE ELEVATOR
- 19. REMOVE WALL AND GLAZED OPENING(S)
- 21. REMOVE SLAB ON GRADE
- 22. NO WORK REQUIRED
- 23. REMOVE CONCRETE ROOF ASSEMBLY TO STRUCTURAL SLAB. DEMO ROOF DRAIN
- 25. REMOVE COPPER ROOFING ASSEMBLY, GUTTERS, AND PLASTER SOFFIT BELOW. REMOVE TO PRIMARY STRUCTURE. DEMOLISH LIGHTING
- 26. REMOVE ACCESS LADDER
- 27. REMOVE (E) ROOF ASSEMBLY (MEMBRANE, INSULATION, ACCESSORY FLASHINGS, AND ROOF DRAIN
- 28. REMOVE ROOF AND STRUCTURE
- 29. SPALLING PAINT, FACED PAINT AND SOME CRACKING AT CONCRETE CANOPY
- 30. REMOVE (E) ASPHALTIC WATERPROOFING MEMBRANE AT (E) CONCRETE CANOPY
- 31. REMOVE (E) ROOF ASSEMBLY, DEMO ROOF AND DOORHOUSE STRUCTURE TO PROVIDE ACCESS FOR NEW MECHANICAL EQUIPMENT
- 32. REMOVE, PROTECT AND STORE (E) STONE COPING FOR REINSTALLATION
- 33. REMOVE (E) MECHANICAL EQUIPMENT AND CURB, REF MECHANICAL
- 34. REMOVE AND SALVAGE EXISTING WOOD PANELS AND TRIM FOR REPLACEMENT
- 35. REMOVE ROOF DRAIN AT THIS LEVEL, REF PLUMBING
- 36. REMOVE (E) GRADE WOOD
- 37. REMOVE MOSAIC TILE, PRESERVE (E) STONE SUBSTRATE
- 38. REMOVE (E) BOOKSHELVES AND SALVAGE FOR RE-INSTALLATION
- 39. REMOVE COUNTERTOP
- 40. REMOVE OPERABLE PARTITION, TRACK AND COVER DOORS
- 41. REMOVE (E) ROLL-UP DOOR AND SALVAGE FOR RE-INSTALLATION
- 42. REMOVE (E) GUTTER AND DOWNSPOUT
- 43. REMOVE INTERIOR CONVECTOR PIPE CHASE BELOW GUTTER
- 44. ALIGN
- 45. PROTECT (E) LIMESTONE BASE. SALVAGE ANY REMOVED
- 46. REMOVE EXISTING DOORS AND FRAME STOPS. LEAVE TRIM
- 47. SAWCUT AND BACKFILL (E) CONCRETE FOR ELECTRICAL CONDUIT. ALIGN CUTS WITH (E) JOINTS
- 48. REMOVE PLASTER MORTAR AT COLUMNBREAM
- 49. REMOVE (E) PLASTER FOR PLUMBING ACCESS AND ADDED BLOCKING
- 50. (E) COPING TO REMAIN IN PLACE
- 51. (E) FALL PROTECTION SYSTEM TO REMAIN IN PLACE
- 52. MAINTAIN FOOTINGS AS REQUIRED TO SUPPORT HISTORIC ENTRY ABOVE
- 53. REMOVE HISTORIC DOORS AND FRAMES. SALVAGE FOR OWNER
- 54. CUT NEW WALL OPENING ALIGNED ABOVE DOOR/WINDOW OPENING. SEE MEP DRAWINGS
- 55. REMOVE (E) DISPLAY CASE
- 56. REMOVE FURNING WALL AND CONVECTOR UNITS
- 57. REMOVE PLATFORM AND LADDER, SALVAGE FOR REPLACEMENT OR REPLACE IN KIND
- 58.



ARCHITECTURE  
URBAN DESIGN + PLANNING  
INTERIOR DESIGN

PORTLAND, OREGON 97209  
P: 503.445.7372  
F: 503.445.7385  
SERAPCDX.COM



ERB MEMORIAL UNION - RENOVATION & ADDITION  
PACKAGE 4

UNIVERSITY OF OREGON  
13TH AVENUE & UNIVERSITY STREET

REVISIONS

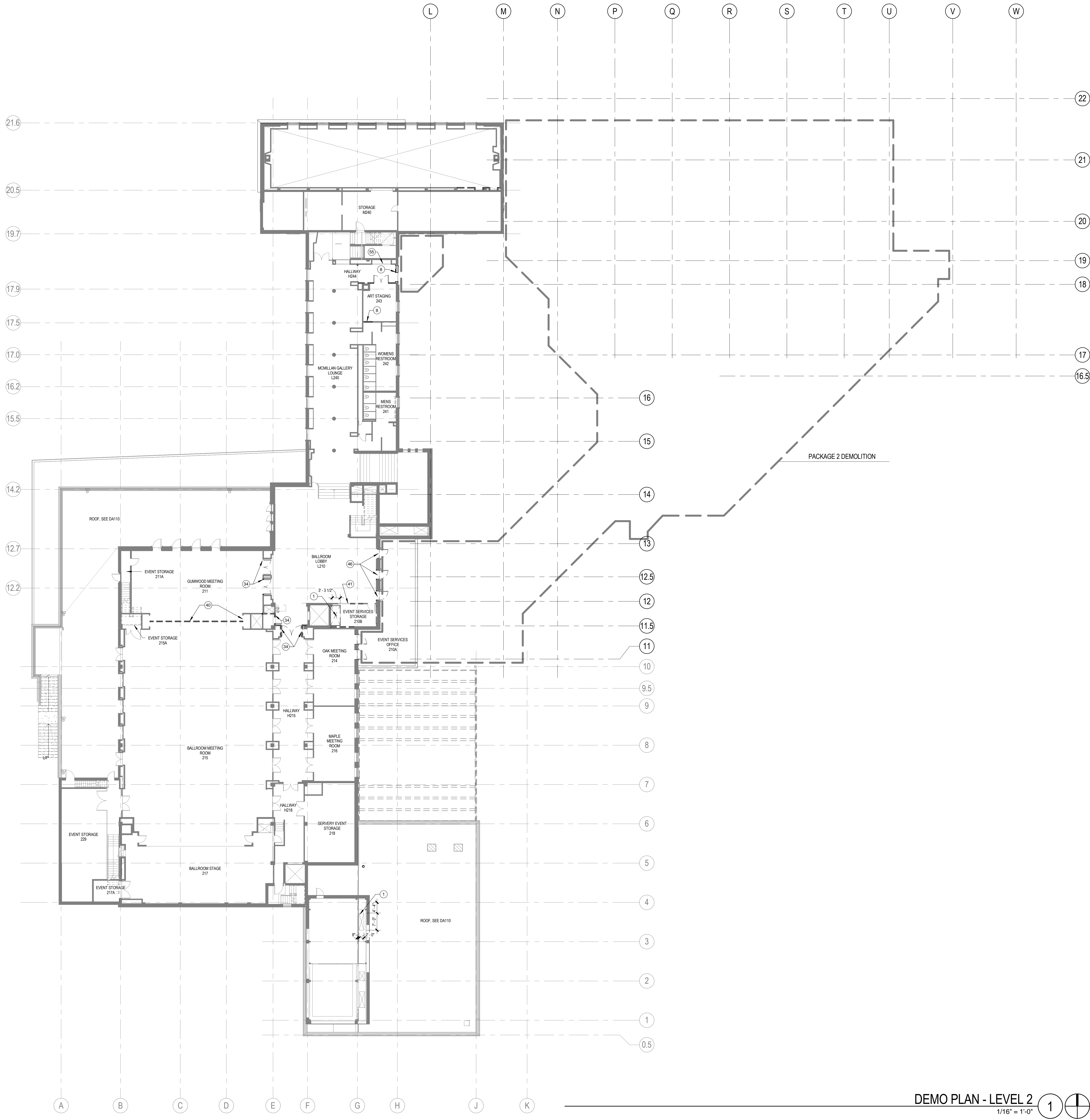
CHECKED BY:  
ISSUE DATE: 2014.08.01  
PROJECT NO.: 11045

DEMO PLAN -  
LEVEL 1  
MEZZANINE/  
MILLS CENTER

DA101m

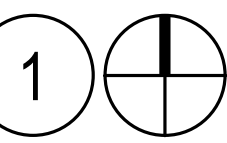
100% CONSTRUCTION DOCUMENTS





DEMO PLAN - LEVEL 2

1/16" = 1'-0"



GENERAL NOTES - DEMOLITION

- A. DEMOLITION PLAN KEYNOTES APPLY TO SHEETS D100-D200. ALL KEYNOTES MAY NOT OCCUR ON THIS SHEET AND DO NOT APPLY TO ANY OTHER SHEETS EXCEPT THOSE NOTED.
- B. GRIDS ARE FOR REFERENCE ONLY. CONTRACTOR TO SET CONTROL POINTS FOR LAYOUT.
- C. PACKAGE 4 DEMOLITION - SALVAGE ALL FEASIBLE MATERIALS FOR OFF-SITE REUSE OR RECYCLING. SEE DIVISION 1 SPECIFICATIONS. SALVAGE FOR ON-SITE REUSE: INTERIOR GULLAN BALINGS, WOOD CEILING ELEMENTS, ROOF HATCH, STONE CORNICE, LIMESTONE BASE, AND BOOKSHELVES AS INDICATED IN DEMOLITION DRAWINGS.
- D. REFER TO A320 SERIES FOR DEMOLITION/SALVAGE SCOPE AT ELEVATIONS.
- E. REFER TO SLAB PLANS FOR NEW OPENINGS IN (E) SLABROOFS.
- F. REFER TO DETAIL T7AB2 AND SPECIFICATIONS 06 15 00 1.04 FOR PENETRATIONS THROUGH CONCRETE SLAB OVER WOOD DECKING.
- G. DIMENSIONS FOR NEW OPENINGS ARE FOR REFERENCE ONLY. CONTRACTOR TO VERIFY REQUIRED DIMENSIONS WITH FINAL INSTALLATION REQUIREMENTS.

LEGEND - DEMO PLAN AND SECTIONS

- EXISTING TO REMAIN
- DEMOLISH

KEYNOTES - DEMO PLANS

- 1. CUT FLOOR OPENING
- 2. REMOVE, PROTECT AND STORE (E) ROOF HATCH FOR REINSTALLATION
- 3. EXISTING TO REMAIN, UNO
- 4. PROTECT HISTORIC ELEMENT
- 5. REMOVE ALL CLADDING MATERIALS AND CONCRETE BASE FROM (E) COLUMNS. LEAVE SURFACE ROUGH FOR NEW CLADDING.
- 6. REMOVE PAVING
- 7. REMOVE FLOOR FINISH
- 8. CUT NEW OPENING, SEE STRUCTURAL
- 9. REMOVE CEILING MATERIAL AND LIGHTING
- 10. REMOVE EXISTING STONEFRONT AND CURB
- 11. REMOVE (E) WINDOW AND COVERING
- 12. REMOVE (E) RAMP
- 13. REMOVE STAIRS
- 14. REMOVE WINDOW ASSEMBLY AND CUT OPENING TO GRADE, SEE ELEVATIONS, A320 SERIES
- 15. REMOVE WINDOW ASSEMBLY, SEE ELEVATIONS, A320 SERIES
- 16. REMOVE WINDOW SASHES
- 17. REMOVE TOPPING SLAB
- 18. REMOVE ELEVATOR
- 19. REMOVE WALL AND GLAZED OPENINGS(S)
- 20. REMOVE SLAB ON GRADE
- 21. NO WORK REQUIRED
- 22. REMOVE CONCRETE ROOF ASSEMBLY TO STRUCTURAL SLAB, DEMO ROOF DRAIN
- 23. REMOVE COPPER ROOFING ASSEMBLY, GUTTERS, AND PLASTER SOFFIT BELOW, REMOVE TO PRIMARY STRUCTURE, DEMOLISH LIGHTING
- 24. REMOVE ACCESS LADDER
- 25. REMOVE (E) ROOF ASSEMBLY (MEMBRANE, INSULATION, ACCESSORY FLASHINGS, AND ROOF DRAINS
- 26. REMOVE ROOF AND STRUCTURE
- 27. SPALLING PAINT, FACED PAINT AND SOME CRACKING AT CONCRETE CANOPY
- 28. REMOVE (E) ASPHALTIC WATERPROOFING MEMBRANE AT (E) CONCRETE CANOPY
- 29. REMOVE (E) ROOF ASSEMBLY, DEMO ROOF AND DOGHOUSE STRUCTURE TO PROVIDE ACCESS FOR NEW MECHANICAL EQUIPMENT
- 30. REMOVE, PROTECT AND STORE (E) STONE CORNICE FOR REINSTALLATION
- 31. REMOVE (E) MECHANICAL EQUIPMENT AND CURB, REF. MECHANICAL
- 32. REMOVE AND SALVAGE EXISTING WOOD PANELS AND TRIM FOR REPLACEMENT
- 33. REMOVE ROOF DRAIN AT THIS LEVEL, REF. PLUMBING
- 34. REMOVE (E) GREASE HOOD
- 35. REMOVE MOSAIC TILE, PRESERVE (E) STONE SUBSTRATE
- 36. REMOVE (E) BOOKSHELVES AND SALVAGE FOR REINSTALLATION
- 37. REMOVE CATHWALK
- 38. REMOVE OPERABLE PARTITION, TRACK AND COVER DOORS
- 39. REMOVE (E) ROLL UP DOOR AND SALVAGE FOR RE-INSTALLATION
- 40. REMOVE (E) GUTTER AND DOWNSPOUT
- 41. REMOVE INTERIOR CONNECTOR PIPE CHASE BELOW GUTTER
- 42. ALIGN
- 43. PROTECT (E) LIMESTONE BASE, SALVAGE ANY REMOVED
- 44. REMOVE EXISTING DOORS AND FRAME STOPS, LEAVE TRIM
- 45. SAWCUT AND BACKFILL (E) CONCRETE FOR ELECTRICAL CONDUIT, ALIGN CUTS WITH (E) JOINTS
- 46. REMOVE PLASTER WRAP AT COLUMN/BEAM
- 47. REMOVE (E) PLASTER FOR PLUMBING ACCESS AND ADDED BLOCKING
- 48. (E) CURB TO REMAIN IN PLACE
- 49. (E) FALL PROTECTION SYSTEM TO REMAIN IN PLACE
- 50. MAINTAIN FOOTINGS AS REQUIRED TO SUPPORT HISTORIC ENTRY ABOVE
- 51. REMOVE HISTORIC DOORS AND FRAMES, SALVAGE FOR OWNER
- 52. CUT NEW WALL OPENING ALIGNED ABOVE DOOR/WINDOW OPENING, SEE MEP DRAWINGS
- 53. REMOVE (E) DISPLAY CASE
- 54. REMOVE FLOORING WALL AND CONNECTOR UNITS
- 55. REMOVE PLATFORM AND LADDER, SALVAGE FOR REPLACEMENT OR REPLACE IN KIND
- 56.
- 57.
- 58.

ERB MEMORIAL UNION - RENOVATION & ADDITION  
PACKAGE 4

REVISIONS

CHECKED BY:  
ISSUE DATE: 2014.08.01  
PROJECT NO.: 11045

DEMO PLAN -  
LEVEL 2

DA102

100% CONSTRUCTION DOCUMENTS

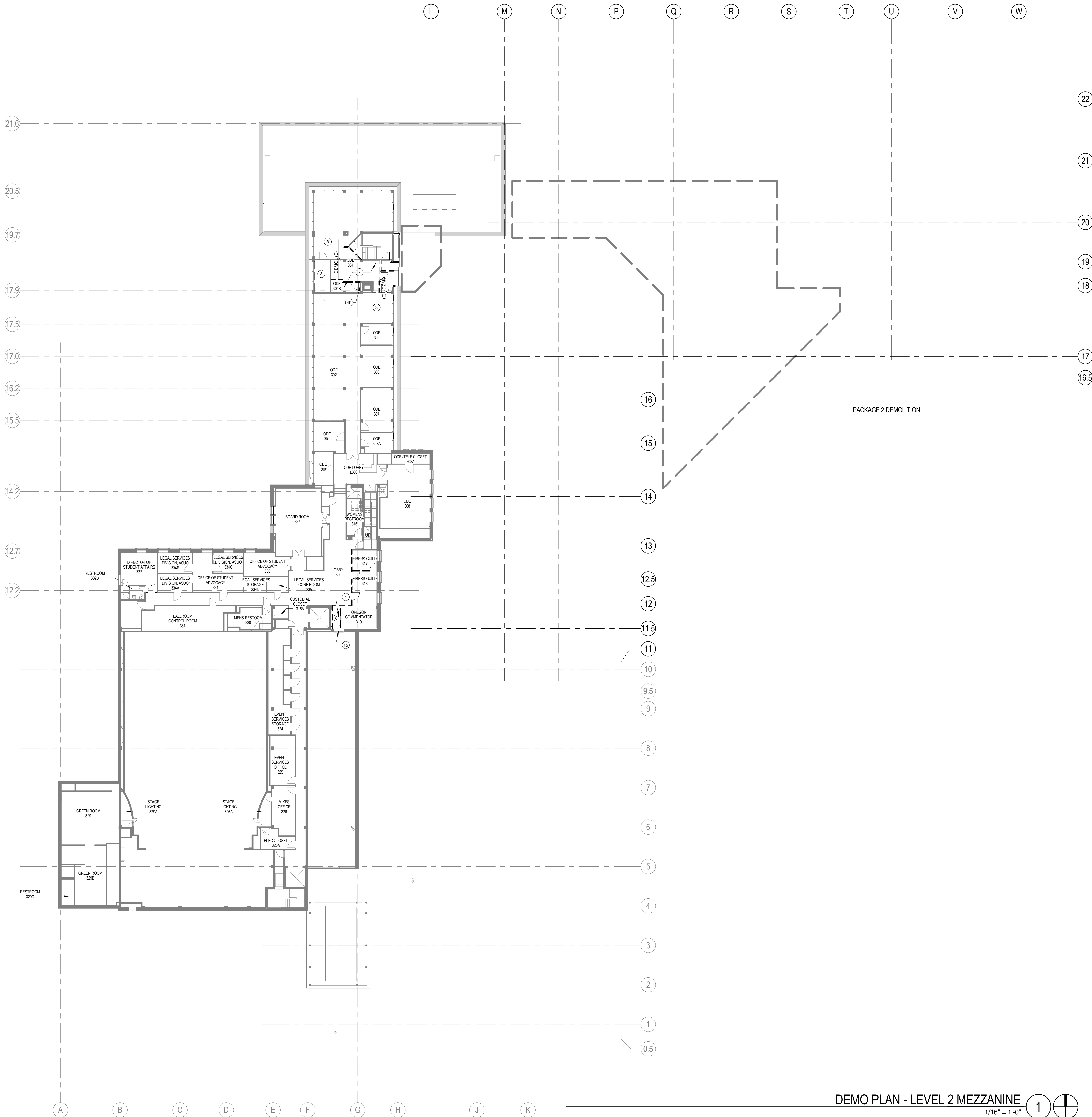
UNIVERSITY OF OREGON  
13TH AVENUE & UNIVERSITY STREET

REGISTERED ARCHITECT  
DONALD D. EGGLESTON  
PORTLAND, OREGON  
STATE OF OREGON

ARCHITECTURE  
URBAN DESIGN + PLANNING  
INTERIOR DESIGN

PORTLAND, OREGON 97209  
P: 503.445.7372  
F: 503.445.7385  
SERAPDX.COM





DEMO PLAN - LEVEL 2 MEZZANINE

1/16" = 1'-0"



GENERAL NOTES - DEMOLITION

- DEMOLITION PLAN KEYNOTES APPLY TO SHEETS D100-D103. ALL KEYNOTES MAY NOT OCCUR ON THIS SHEET AND DO NOT APPLY TO ANY OTHER SHEETS EXCEPT THOSE NOTED.
- GRIDS ARE FOR REFERENCE ONLY. CONTRACTOR TO SET CONTROL POINTS FOR LAYOUT.
- PACKAGE 4 DEMOLITION - SALVAGE ALL FEASIBLE MATERIALS FOR OFF-SITE REUSE OR RECYCLING. SEE DIVISION 1 SPECIFICATIONS. SALVAGE FOR ON-SITE REUSE: INTERIOR GLULAM RAILINGS, WOOD CEILING ELEMENTS, ROOF HATCH, STONE COPING, LIMESTONE BASE, AND BOOKSHELVES AS INDICATED IN DEMOLITION DRAWINGS.
- REFER TO A320 SERIES FOR DEMOLITION/SALVAGE SCOPE AT ELEVATIONS.
- REFER TO SLAB PLANS FOR NEW OPENINGS IN (E) SLABROOFS.
- REFER TO DETAIL TABS2 AND SPECIFICATIONS 06 15 00 1.34 FOR PENETRATIONS THROUGH CONCRETE SLAB OVER WOOD DECKING.
- DIMENSIONS FOR NEW OPENINGS ARE FOR REFERENCE ONLY. CONTRACTOR TO VERIFY REQUIRED DIMENSIONS WITH FINAL INSTALLATION REQUIREMENTS.

LEGEND - DEMO PLAN AND SECTIONS

- EXISTING TO REMAIN  
DEMOLISH

KEYNOTES - DEMO PLANS

- CUT FLOOR OPENING
- REMOVE, PROTECT AND STORE (E) ROOF HATCH FOR REINSTALLATION
- EXISTING TO REMAIN, LINO
- PROTECT HISTORIC ELEMENT
- REMOVE ALL CLADDING MATERIALS AND CONCRETE BASE FROM (E) COLUMNS. LEAVE SURFACE ROUGH FOR NEW CLADDING
- REMOVE PAVING
- REMOVE FLOOR FINISH
- CUT NEW OPENING. SEE STRUCTURAL
- REMOVE CEILING MATERIAL AND LIGHTING
- REMOVE EXISTING STONE FRONT AND CURB
- REMOVE (E) WINDOW AND COVERING
- REMOVE (E) RAMP
- REMOVE STAIRS
- REMOVE WINDOW ASSEMBLY AND CUT OPENING TO GRADE. SEE ELEVATIONS, A320 SERIES
- REMOVE WINDOW ASSEMBLY. SEE ELEVATIONS, A320 SERIES
- REMOVE WINDOW SASHES
- REMOVE TOPPING SLAB
- REMOVE ELEVATOR
- REMOVE WALL AND GLAZED OPENINGS
- REMOVE SLAB ON GRADE
- NO WORK REQUIRED
- REMOVE CONCRETE ROOF ASSEMBLY TO STRUCTURAL SLAB. DEMO ROOF DRAINS
- REMOVE COPPER ROOFING ASSEMBLY, GUTTERS, AND PLASTER SOFFIT BELOW. REMOVE TO PRIMARY STRUCTURE. DEMOLISH LIGHTING
- REMOVE ACCESS LADDER
- REMOVE (E) ROOF ASSEMBLY (MEMBRANE, INSULATION, ACCESSORY FLASHINGS, AND ROOF DRAINS
- REMOVE ROOF AND STRUCTURE
- SPALLING PAINT, FLOCCED PAINT AND SOME CRACKING AT CONCRETE CANOPY
- REMOVE (E) ASPHALTIC WATERPROOFING MEMBRANE AT (E) CONCRETE CANOPY
- REMOVE (E) ROOF ASSEMBLY, DEMO ROOF AND DOGHOUSE STRUCTURE TO PROVIDE ACCESS FOR NEW MECHANICAL EQUIPMENT
- REMOVE, PROTECT AND STORE (E) STONE COPING FOR REINSTALLATION
- REMOVE (E) MECHANICAL EQUIPMENT AND CURB. REF MECHANICAL
- REMOVE AND SALVAGE EXISTING WOOD PANELS AND TRIM FOR REPLACEMENT
- REMOVE ROOF DRAIN AT THIS LEVEL. REF PLUMBING
- REMOVE (E) GREASE HOOD
- REMOVE MOSAIC TILE. PRESERVE (E) STONE SUBSTRATE
- REMOVE BOOKSHELVES AND SALVAGE FOR RE-INSTALLATION
- REMOVE CATHARA
- REMOVE OPERABLE PARTITION, TRACK AND COVER DOORS
- REMOVE (E) ROLL-UP DOOR AND SALVAGE FOR RE-INSTALLATION
- REMOVE (E) GUTTER AND DOWNSPOUT
- REMOVE INTERIOR CONVECTOR PIPE CHASE BELOW GUTTER
- ALION
- PROTECT (E) LIMESTONE BASE. SALVAGE ANY REMOVED
- REMOVE EXISTING DOORS AND FRAME STOPS. LEAVE TRIM
- SAWOUT AND BACKFILL (E) CONCRETE FOR ELECTRICAL CONDUIT, ALIGN CUTS WITH (E) JOINTS
- REMOVE PLASTER WRM AT COLUMNBREAM
- REMOVE (E) PLASTER FOR PLUMBING ACCESS AND ADDED BLOCKING
- (E) COPING TO REMAIN IN PLACE
- (E) FALL PROTECTION SYSTEM TO REMAIN IN PLACE
- MAINTAIN FOOTINGS AS REQUIRED TO SUPPORT HISTORIC ENTRY ABOVE
- REMOVE HISTORIC DOORS AND FRAMES. SALVAGE FOR OWNER
- CUT NEW WALL OPENING ALLOWED ABOVE DOOR/WINDOW OPENING. SEE MEP DRAWINGS
- REMOVE (E) DISPLAY CASE
- REMOVE FURNING WALL AND CONNECTOR UNITS
- REMOVE PLATFORM AND LADDER. SALVAGE FOR REPLACEMENT OR REPLACE IN KIND
- 



ARCHITECTURE  
URBAN DESIGN + PLANNING  
INTERIOR DESIGN

PORTLAND OREGON 97209  
P. 503.445.7372  
F. 503.445.7385  
SERAPDX.COM



ERB MEMORIAL UNION - RENOVATION & ADDITION  
PACKAGE 4

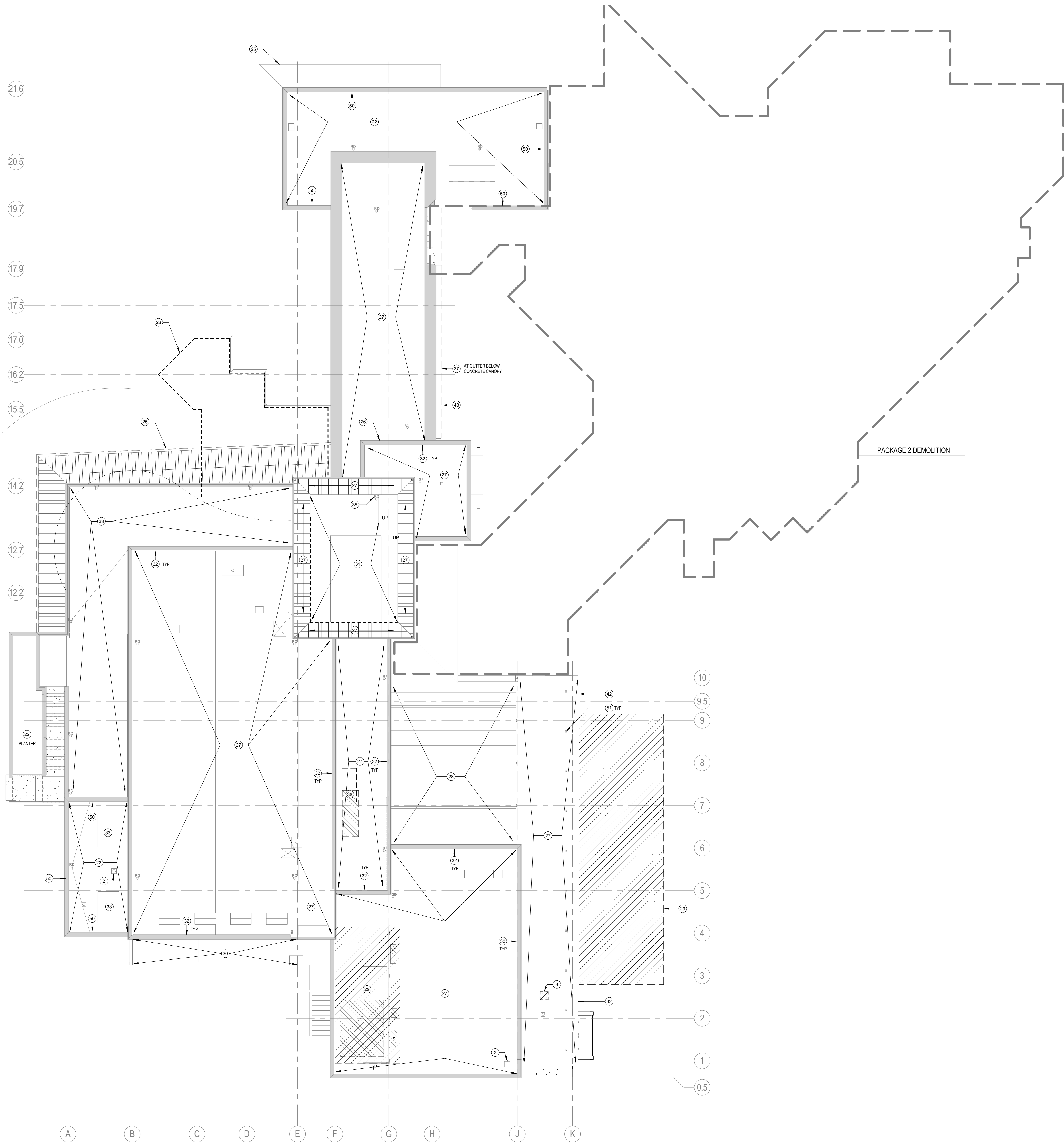
UNIVERSITY OF OREGON  
13TH AVENUE & UNIVERSITY STREET

REVISIONS

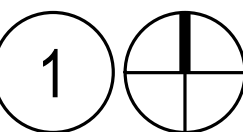
CHECKED BY:  
ISSUE DATE: 2014.08.01  
PROJECT NO.: 11045

DEMO PLAN -  
LEVEL 3

DA103



DEMO PLAN - ROOF  
1/16" = 1'-0"



GENERAL NOTES - DEMOLITION

- A. DEMOLITION PLAN KEYNOTES APPLY TO SHEETS D100-D103. ALL KEYNOTES MAY NOT OCCUR ON THIS SHEET AND DO NOT APPLY TO ANY OTHER SHEETS EXCEPT THOSE NOTED.
- B. GRIDS ARE FOR REFERENCE ONLY. CONTRACTOR TO SET CONTROL POINTS FOR LAYOUT.
- C. PACKAGE 4 DEMOLITION - SALVAGE ALL FEASIBLE MATERIALS FOR OFF-SITE REUSE OR RECYCLING. SEE DIVISION 1 SPECIFICATIONS. SALVAGE FOR ON-SITE REUSE: INTERIOR GLULAM RAILINGS, WOOD CEILING ELEMENTS, ROOF HATCH, STONE COPING, LIMESTONE BASE, AND BOOKSHELVES AS INDICATED IN DEMOLITION DRAWINGS.
- D. REFER TO A200 SERIES FOR DEMOLITION/SALVAGE SCOPE AT ELEVATIONS.
- E. REFER TO SLAB PLANS FOR NEW OPENINGS IN (E) SLAB/ROOFS.
- F. REFER TO DETAIL TABS2 AND SPECIFICATIONS 06 15 00 1.04 FOR PENETRATIONS THROUGH CONCRETE SLAB OVER WOOD DECKING.
- G. DIMENSIONS FOR NEW OPENINGS ARE FOR REFERENCE ONLY. CONTRACTOR TO VERIFY REQUIRED DIMENSIONS WITH FINAL INSTALLATION REQUIREMENTS.

LEGEND - DEMO PLAN AND SECTIONS

- EXISTING TO REMAIN  
DEMOLISH

KEYNOTES - DEMO PLANS

- 1 CUT FLOOR OPENING  
2 REMOVE, PROTECT AND STORE (E) ROOF HATCH FOR REINSTALLATION  
3 EXISTING TO REMAIN, UNO  
4 PROTECT HISTORIC ELEMENT  
5 REMOVE ALL CLADDING MATERIALS AND CONCRETE BASE FROM (E) COLUMNS, LEAVE SURFACE ROUGH FOR NEW CLADDING  
6 REMOVE PAVING  
7 REMOVE FLOOR FINISH  
8 CUT NEW OPENING, SEE STRUCTURAL  
9 REMOVE CEILING MATERIAL AND LIGHTING  
10 REMOVE EXISTING STONEFRONT AND CURB  
11 REMOVE (E) WINDOW AND COVERING  
12 REMOVE (E) RAMP  
13 REMOVE STAIRS  
14 REMOVE WINDOW ASSEMBLY AND CUT OPENING TO GRADE, SEE ELEVATIONS, A200 SERIES  
15 REMOVE WINDOW ASSEMBLY, SEE ELEVATIONS, A200 SERIES  
16 REMOVE WINDOW SASHES  
17 REMOVE TOPPING SLAB  
18 REMOVE ELEVATOR  
19 REMOVE WALL AND GLAZED OPENING(S)  
21 REMOVE SLAB ON GRADE  
22 NO WORK REQUIRED  
23 REMOVE CONCRETE ROOF ASSEMBLY TO STRUCTURAL SLAB, DEMO ROOF DRAINS  
25 REMOVE COPPER ROOFING ASSEMBLY, GUTTERS, AND PLASTER SOFFIT BELOW, REMOVE TO PRIMARY STRUCTURE, DEMOLISH LIGHTING  
26 REMOVE ACCESS LADDERS  
27 REMOVE (E) ROOF ASSEMBLY (MEMBRANE, INSULATION, ACCESSORY FLASHINGS, AND ROOF DRAINS)  
28 REMOVE ROOF AND STRUCTURE  
29 SPALLING PAINT, FACED PAINT AND SOME CRACKING AT CONCRETE CANOPY  
30 REMOVE (E) ASPHALTIC WATERPROOFING MEMBRANE AT (E) CONCRETE CANOPY  
31 REMOVE (E) ROOF ASSEMBLY, DEMO ROOF AND DOGHOUSE STRUCTURE TO PROVIDE ACCESS FOR NEW MECHANICAL EQUIPMENT  
32 REMOVE, PROTECT AND STORE (E) STONE COPING FOR REINSTALLATION  
33 REMOVE (E) MECHANICAL EQUIPMENT AND CURB, REF MECHANICAL  
34 REMOVE AND SALVAGE EXISTING WOOD PANELS AND TRIM FOR REPLACEMENT  
35 REMOVE ROOF DRAIN AT THIS LEVEL, REF PLUMBING  
36 REMOVE (E) GREASE HOOD  
37 REMOVE MOSAIC TILE, PRESERVE (E) STONE SUBSTRATE  
38 REMOVE (E) BOOKSHELVES AND SALVAGE FOR RE-INSTALLATION  
39 REMOVE CATALINK  
40 REMOVE OPERABLE PARTITION, TRACK AND COVER DOORS  
41 REMOVE (E) ROLL UP DOOR AND SALVAGE FOR RE-INSTALLATION  
42 REMOVE (E) GUTTER AND DOWNSPOUT  
43 REMOVE INTERIOR CONVECTOR PIPE CHASE BELOW GUTTER  
44 ALIGN  
45 PROTECT (E) LIMESTONE BASE, SALVAGE ANY REMOVED  
46 REMOVE EXISTING DOORS AND FRAME STOPS, LEAVE TRIM  
47 SAWCUT AND BACKFILL (E) CONCRETE FOR ELECTRICAL CONDUIT, ALIGN CUTS WITH (E) JOINTS  
48 REMOVE PLASTER WRAP AT COLUMN/BEAM  
49 REMOVE (E) PLASTER FOR PLUMBING ACCESS AND ADDED BLOCKING  
50 (E) COPING TO REMAIN IN PLACE  
51 (E) RAIL PROTECTION SYSTEM TO REMAIN IN PLACE  
52 MAINTAIN FOOTINGS AS REQUIRED TO SUPPORT HISTORIC ENTRY ABOVE  
53 REMOVE HISTORIC DOORS AND FRAMES, SALVAGE FOR OWNER  
54 CUT NEW WALL OPENING ALIGNED ABOVE DOOR/WINDOW OPENING, SEE MEP DRAWINGS  
55 REMOVE (E) DISPLAY CASE  
56 REMOVE FLOORING WALL AND CONVECTOR UNITS  
57 REMOVE PLATFORM AND LADDER, SALVAGE FOR REPLACEMENT OR REPLACE IN KIND  
58



ARCHITECTURE  
URBAN DESIGN + PLANNING  
INTERIOR DESIGN

PORTLAND, OREGON 97209  
P: 503.445.7372  
F: 503.445.7385  
SERAPDX.COM



ERB MEMORIAL UNION - RENOVATION & ADDITION  
PACKAGE 4

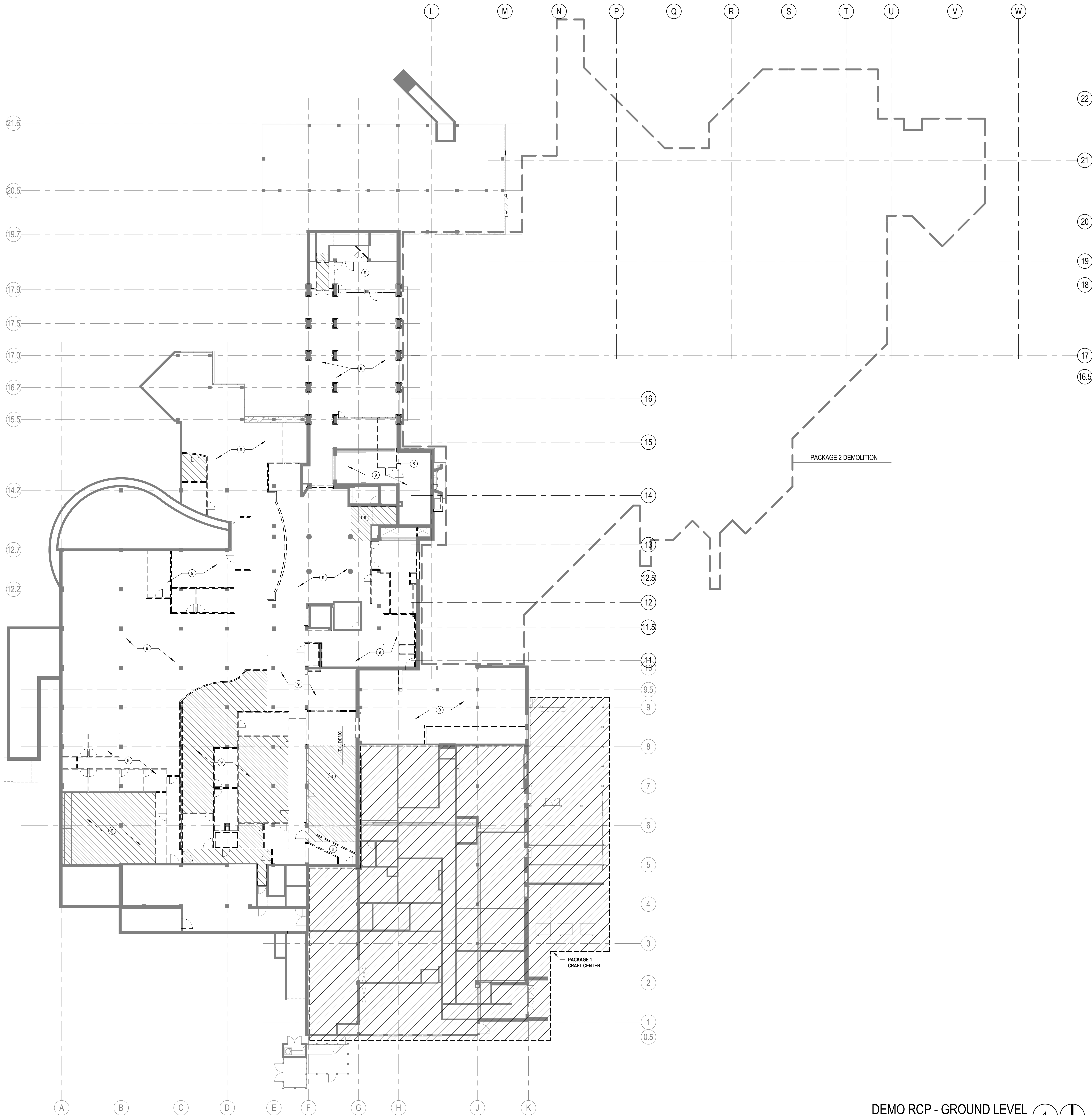
UNIVERSITY OF OREGON  
13TH AVENUE & UNIVERSITY STREET

REVISIONS

CHECKED BY:  
ISSUE DATE: 2014.08.01  
PROJECT NO.: 11045

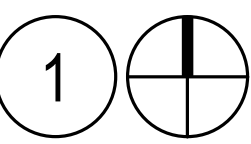
DEMO PLAN -  
ROOF

DA110



DEMO RCP - GROUND LEVEL

1/16" = 1'-0"



## GENERAL NOTES - DEMOLITION

- DEMOLITION PLAN KEYNOTES APPLY TO SHEETS D100-003. ALL KEYNOTES MAY NOT OCCUR ON THIS SHEET AND DO NOT APPLY TO ANY OTHER SHEETS EXCEPT THOSE NOTED.
- GRIDS ARE FOR REFERENCE ONLY. CONTRACTOR TO SET CONTROL POINTS FOR LAYOUT.
- PACKAGE 4 DEMOLITION - SALVAGE ALL FEASIBLE MATERIALS FOR OFF-SITE REUSE OR RECYCLING. SEE DIVISION 1 SPECIFICATIONS. SALVAGE FOR ON-SITE REUSE: INTERIOR GLULAM RAILINGS, WOOD CEILING ELEMENTS, ROOF HATCH, STONE CORNICE, LIMESTONE BASE, AND DOORSHIELDS AS INDICATED IN DEMOLITION DRAWINGS.
- REFER TO A320 SERIES FOR DEMOLITION/SALVAGE SCOPE AT ELEVATIONS.
- REFER TO SLAB PLANS FOR NEW OPENINGS IN (E) SLAB/ROOFS.
- REFER TO DETAIL TABS2 AND SPECIFICATIONS (E) 15.00 1.04 FOR PENETRATIONS THROUGH CONCRETE SLABS OVER WOOD DECKING.
- DIMENSIONS FOR NEW OPENINGS ARE FOR REFERENCE ONLY. CONTRACTOR TO VERIFY REQUIRED DIMENSIONS WITH FINAL INSTALLATION REQUIREMENTS.

## LEGEND - DEMO RCP

- EXISTING TO REMAIN
- DEMOLISH
- EXISTING 2"x2" SUSPENDED ACT
- EXISTING GYPSUM BOARD
- EXISTING EXPOSED CONCRETE
- EXISTING APPLIED ACT
- EXISTING APPLIED ACT

## KEYNOTES - DEMO PLANS

- CUT FLOOR OPENING
- REMOVE, PROTECT AND STORE (E) ROOF HATCH FOR REINSTALLATION
- EXISTING TO REMAIN, UNO
- PROTECT HISTORIC ELEMENT
- REMOVE ALL CLADDING MATERIALS AND CONCRETE BASE FROM (E) COLUMNS. LEAVE SURFACE ROUGH FOR NEW CLADDING
- REMOVE FLOOR FINISH
- CUT NEW OPENING. SEE STRUCTURAL
- REMOVE CEILING MATERIAL AND LIGHTING
- REMOVE EXISTING STOREFRONT AND CURB
- REMOVE (E) WINDOW AND COVERING
- REMOVE (E) RAMP
- REMOVE STAIRS
- REMOVE WINDOW ASSEMBLY AND CUT OPENING TO GRADE. SEE ELEVATIONS, A320 SERIES
- REMOVE WINDOW ASSEMBLY. SEE ELEVATIONS, A320 SERIES
- REMOVE WINDOW SASHES
- REMOVE TOPPING SLAB
- REMOVE ELEVATOR
- REMOVE WALL AND GLAZED OPENING(S)
- REMOVE SLAB ON GRADE
- NO WORK REQUIRED
- REMOVE CONCRETE ROOF ASSEMBLY TO STRUCTURAL SLAB. DEMO ROOF DRAINS
- REMOVE COPPER ROOFING ASSEMBLY, GUTTERS, AND PLASTER SOFFIT BELOW. REMOVE TO PRIMARY STRUCTURE. DEMOLISH LIGHTING
- REMOVE ACCESS LADDER
- REMOVE (E) ROOF ASSEMBLY (MEMBRANE, INSULATION, ACCESSORY FLASHINGS, AND ROOF DRAINS
- REMOVE ROOF AND STRUCTURE
- SPALLING PAINT, FADING PAINT AND SOME CRACKING AT CONCRETE CANOPY
- REMOVE (E) ASPHALTIC WATERPROOFING MEMBRANE AT (E) CONCRETE CANOPY
- REMOVE (E) ROOF ASSEMBLY, DEMO ROOF AND DOORHOUSE STRUCTURE TO PROVIDE ACCESS FOR NEW MECHANICAL EQUIPMENT
- REMOVE, PROTECT AND STORE (E) STONE CORNICE FOR REINSTALLATION
- REMOVE (E) MECHANICAL EQUIPMENT AND CURB. REF MECHANICAL
- REMOVE AND SALVAGE EXISTING WOOD PANELS AND TRIM FOR REPLACEMENT
- REMOVE ROOF DRAIN AT THIS LEVEL. REF PLUMBING
- REMOVE (E) GREASE HOOD
- REMOVE MOSAIC TILE. PRESERVE (E) STONE SUBSTRATE
- REMOVE (E) BOOKSHELVES AND SALVAGE FOR REINSTALLATION
- REMOVE CATWALK
- REMOVE OPERABLE PARTITION, TRACK AND COVER DOORS
- REMOVE (E) ROLL-UP DOOR AND SALVAGE FOR REINSTALLATION
- REMOVE (E) GUTTER AND DOWNSPOUT
- REMOVE INTERIOR CONNECTOR PIPE CHASE BELOW GUTTER
- ALIGN
- PROTECT (E) LIMESTONE BASE. SALVAGE ANY REMOVED
- REMOVE EXISTING DOORS AND FRAME STOPS. LEAVE TRIM
- SAWCUT AND BACKFILL (E) CONCRETE FOR ELECTRICAL CONDUIT, ALIGN CUTS WITH (E) JOINTS
- REMOVE PLASTER WRAP AT COLUMN/BEAM
- REMOVE (E) PLASTER FOR PLUMBING ACCESS AND ADDED BLOCKING
- (E) CORPND TO REMAIN IN PLACE
- (E) FALL PROTECTION SYSTEM TO REMAIN IN PLACE
- MAINTAIN FOOTINGS AS REQUIRED TO SUPPORT HISTORIC ENTRY ABOVE
- REMOVE HISTORIC DOORS AND FRAMES. SALVAGE FOR OWNER
- CUT NEW WALL OPENING ALIGNED ABOVE DOOR/WINDOW OPENING. SEE MEP DRAWINGS
- REMOVE (E) DISPLAY CASE
- REMOVE PLUMBING WALL AND CONNECTOR UNITS
- REMOVE PLATFORM AND LADDER. SALVAGE FOR REPLACEMENT OR REPLACE IN KIND
- 



ARCHITECTURE  
URBAN DESIGN + PLANNING  
INTERIOR DESIGN

PORTLAND, OREGON 97209  
P: 503.445.7372  
F: 503.445.7395  
SERAPDX.COM



ERB MEMORIAL UNION - RENOVATION & ADDITION  
PACKAGE 4

UNIVERSITY OF OREGON  
13TH AVENUE & UNIVERSITY STREET

REVISIONS

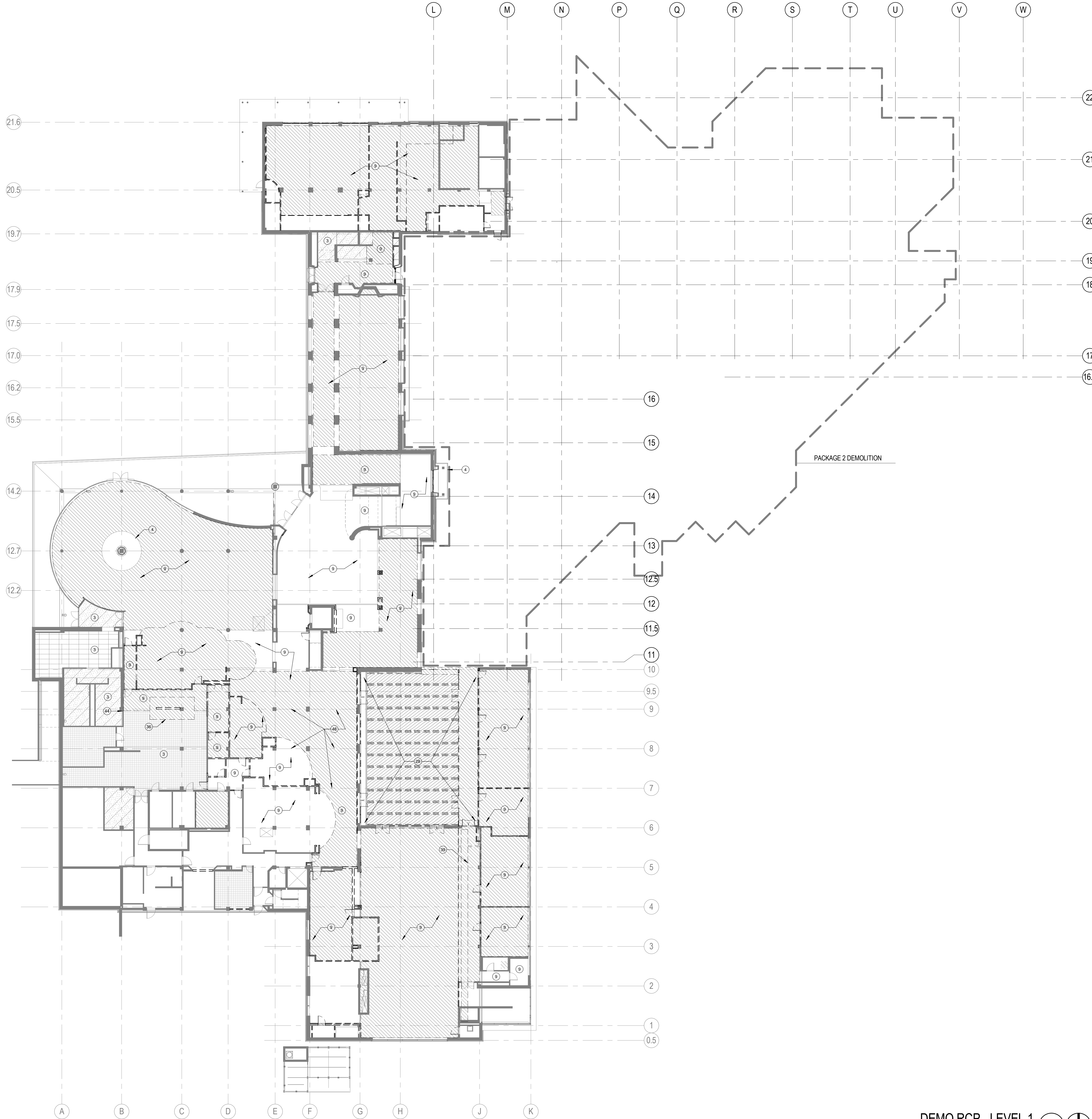
CHECKED BY:  
ISSUE DATE: 2014.08.01  
PROJECT NO: 11045

DEMO RCP -  
GROUND LEVEL

DA200

100% CONSTRUCTION DOCUMENTS





GENERAL NOTES - DEMOLITION

- A. DEMOLITION PLAN KEYNOTES APPLY TO SHEETS D100-0203. ALL KEYNOTES MAY NOT OCCUR ON THIS SHEET AND DO NOT APPLY TO ANY OTHER SHEETS EXCEPT THOSE NOTED.
- B. GRIDS ARE FOR REFERENCE ONLY. CONTRACTOR TO SET CONTROL POINTS FOR LAYOUT.
- C. PACKAGE 4 DEMOLITION - SALVAGE ALL FEASIBLE MATERIALS FOR OFF-SITE REUSE OR RECYCLING. SEE DIVISION 1 SPECIFICATIONS. SALVAGE FOR ON-SITE REUSE: INTERIOR GLULAM RAILINGS, WOOD CEILING ELEMENTS, ROOF HATCH, STONE CORNING, LIMESTONE BASE, AND BOOKSHELVES AS INDICATED IN DEMOLITION DRAWINGS.
- D. REFER TO A320 SERIES FOR DEMOLITION/SALVAGE SCOPE AT ELEVATIONS.
- E. REFER TO SLAB PLANS FOR NEW OPENINGS IN (E) SLABROOFS.
- F. REFER TO DETAIL TAB82 AND SPECIFICATIONS 06 15 00 1.04 FOR PENETRATIONS THROUGH CONCRETE SLAB OVER WOOD DECKING.
- G. DIMENSIONS FOR NEW OPENINGS ARE FOR REFERENCE ONLY. CONTRACTOR TO VERIFY REQUIRED DIMENSIONS WITH FINAL INSTALLATION REQUIREMENTS.

LEGEND - DEMO RCP

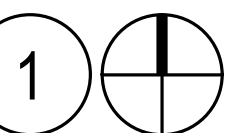
- EXISTING TO REMAIN
- DEMOLISH
- EXISTING 2'X2' SUSPENDED ACT
- EXISTING GYPSUM BOARD
- EXISTING EXPOSED CONCRETE
- EXISTING APPLIED ACT
- EXISTING APPLIED ACT

KEYNOTES - DEMO PLANS

- 1 CUT FLOOR OPENING
- 2 REMOVE, PROTECT AND STORE (E) ROOF HATCH FOR REINSTALLATION
- 3 EXISTING TO REMAIN, UNO
- 4 PROTECT HISTORIC ELEMENT
- 5 REMOVE ALL CLADDING MATERIALS AND CONCRETE BASE FROM (E) COLUMNS, LEAVE SURFACE ROUGH FOR NEW CLADDING
- 6 REMOVE PAINTING
- 7 REMOVE FLOOR FINISH
- 8 CUT NEW OPENING, SEE STRUCTURAL
- 9 REMOVE CEILING MATERIAL AND LIGHTING
- 10 REMOVE EXISTING STOREFRONT AND CURB
- 11 REMOVE (E) WINDOW AND COVERING
- 12 REMOVE (E) RAMP
- 13 REMOVE STAIRS
- 14 REMOVE WINDOW ASSEMBLY AND CUT OPENING TO GRADE, SEE ELEVATIONS, A320 SERIES
- 15 REMOVE WINDOW ASSEMBLY, SEE ELEVATIONS, A320 SERIES
- 16 REMOVE WINDOW SASHES
- 17 REMOVE TOPPING SLAB
- 18 REMOVE ELEVATOR
- 19 REMOVE WALL AND GLAZED OPENING(S)
- 20 REMOVE SLAB ON GRADE
- 21 NO WORK REQUIRED
- 22 REMOVE CONCRETE ROOF ASSEMBLY TO STRUCTURAL SLAB, DEMO ROOF DRAINS
- 23 REMOVE COPPER ROOFING ASSEMBLY, GUTTERS, AND PLASTER SOFFIT BELOW, REMOVE TO PRIMARY STRUCTURE, DEMOLISH LIGHTING
- 24 REMOVE ACCESS LADDER
- 25 REMOVE (E) ROOF ASSEMBLY, INSULATION, ACCESSORY FLASHINGS, AND ROOF DRAINS
- 26 REMOVE ROOF AND STRUCTURE
- 27 SPALLING PAINT, FADED PAINT AND SOME CRACKING AT CONCRETE CANOPY
- 28 REMOVE (E) ASPHALTIC WATERPROOFING MEMBRANE AT (E) CONCRETE CANOPY
- 29 REMOVE (E) ROOF ASSEMBLY, DEMO ROOF AND DOORHOUSE STRUCTURE TO PROVIDE ACCESS FOR NEW MECHANICAL EQUIPMENT
- 30 REMOVE, PROTECT AND STORE (E) STONE CORNING FOR REINSTALLATION
- 31 REMOVE (E) MECHANICAL EQUIPMENT AND CURB, REF MECHANICAL
- 32 REMOVE AND SALVAGE EXISTING WOOD PANELS AND TRIM FOR REPLACEMENT
- 33 REMOVE ROOF DRAIN AT THIS LEVEL, REF PLUMBING
- 34 REMOVE (E) GREASE HOOD
- 35 REMOVE MOSAIC TILE, PRESERVE (E) STONE SUBSTRATE
- 36 REMOVE (E) BOOKSHELVES AND SALVAGE FOR RE-INSTALLATION
- 37 REMOVE CATWALK
- 38 REMOVE OPERABLE PARTITION, TRACK AND COVER DOORS
- 39 REMOVE (E) ROLL-UP DOOR AND SALVAGE FOR RE-INSTALLATION
- 40 REMOVE (E) GUTTER AND DOWNSPOUT
- 41 REMOVE INTERIOR CONNECTOR PIPE CHASE BELOW GUTTER
- 42 ALIGN
- 43 PROTECT (E) LIMESTONE BASE, SALVAGE ANY REMOVED
- 44 REMOVE EXISTING DOORS AND FRAME STOPS, LEAVE TRIM
- 45 SAWCUT AND BACKFILL (E) CONCRETE FOR ELECTRICAL CONDUIT, ALIGN OUTS WITH (E) JOINTS
- 46 REMOVE PLASTER WRAP AT COLUMN/BEAM
- 47 REMOVE (E) PLASTER FOR PLUMBING ACCESS AND ADDED BLOCKING
- 48 (E) CORNING TO REMAIN IN PLACE
- 49 (E) FALL PROTECTION SYSTEM TO REMAIN IN PLACE
- 50 MAINTAIN FOOTINGS AS REQUIRED TO SUPPORT HISTORIC ENTRY ABOVE
- 51 REMOVE HISTORIC DOORS AND FRAMES, SALVAGE FOR OWNER
- 52 CUT NEW WALL OPENING ALIGNED ABOVE DOOR/WINDOW OPENING, SEE MEP DRAWINGS
- 53 REMOVE (E) DISPLAY CASE
- 54 REMOVE FURRING WALL AND CONVECTOR UNITS
- 55 REMOVE PLATFORM AND LADDER, SALVAGE FOR REPLACEMENT OR REPLACE IN KIND
- 56
- 57
- 58

DEMO RCP - LEVEL 1

1/16" = 1'-0"



ERB MEMORIAL UNION - RENOVATION & ADDITION  
PACKAGE 4

UNIVERSITY OF OREGON  
13TH AVENUE & UNIVERSITY STREET

REVISIONS

CHECKED BY:  
ISSUE DATE: 2014.08.01  
PROJECT NO: 11045

DEMO RCP -  
LEVEL 1

DA201

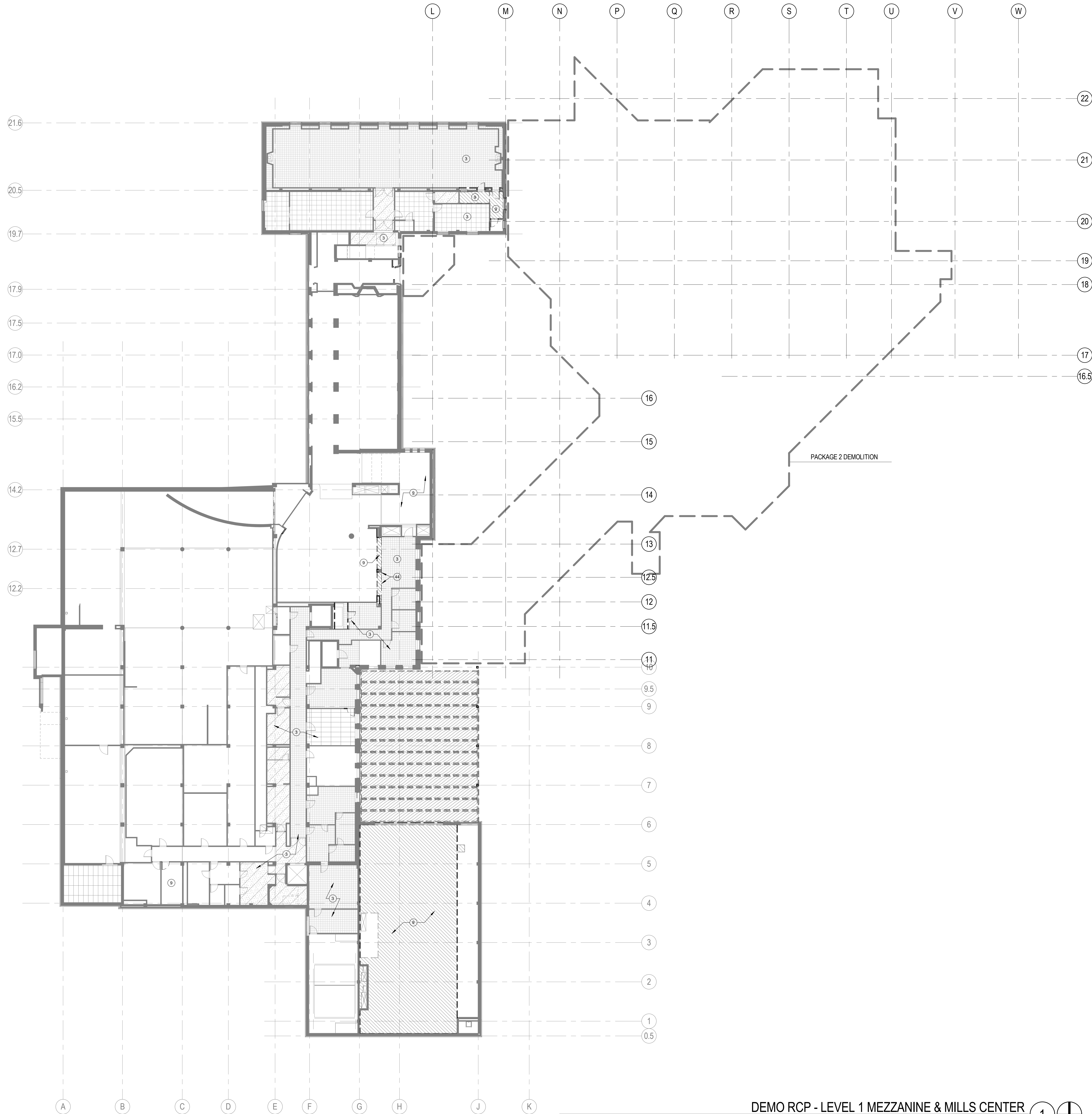


ARCHITECTURE  
URBAN DESIGN + PLANNING  
INTERIOR DESIGN

PORTLAND, OREGON 97209  
P: 503.445.7372  
F: 503.445.7395  
SERAPDX.COM







GENERAL NOTES - DEMOLITION

- A. DEMOLITION PLAN KEYNOTES APPLY TO SHEETS D100-D200. ALL KEYNOTES MAY NOT OCCUR ON THIS SHEET AND DO NOT APPLY TO ANY OTHER SHEETS EXCEPT THOSE NOTED.
- B. GRIDS ARE FOR REFERENCE ONLY. CONTRACTOR TO SET CONTROL POINTS FOR LAYOUT.
- C. PACKAGE 4 DEMOLITION - SALVAGE ALL FEASIBLE MATERIALS FOR OFF-SITE REUSE OR RECYCLING. SEE DIVISION 1 SPECIFICATIONS. SALVAGE FOR ON-SITE REUSE: INTERIOR GLASS RAILINGS, WOOD CEILING ELEMENTS, ROOF HATCH, STONE COPING, LIMESTONE BASE, AND BOOKSHELVES AS INDICATED IN DEMOLITION DRAWINGS.
- D. REFER TO A300 SERIES FOR DEMOLITION/SALVAGE SCOPE AT ELEVATIONS.
- E. REFER TO SLAB PLANS FOR NEW OPENINGS IN (E) SLAB ROOFS.
- F. REFER TO DETAIL TABS2 AND SPECIFICATIONS 05 15 00 1.04 FOR PENETRATIONS THROUGH CONCRETE SLAB OVER WOOD DECKING.
- G. DIMENSIONS FOR NEW OPENINGS ARE FOR REFERENCE ONLY. CONTRACTOR TO VERIFY REQUIRED DIMENSIONS WITH FINAL INSTALLATION REQUIREMENTS.

LEGEND - DEMO RCP

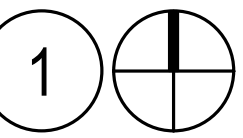
- EXISTING TO REMAIN
- DEMOLISH
- EXISTING 2'X2' SUSPENDED ACT
- EXISTING GYPSUM BOARD
- EXISTING EXPOSED CONCRETE
- EXISTING APPLIED ACT
- EXISTING APPLIED ACT

KEYNOTES - DEMO PLANS

1. CUT FLOOR OPENING
2. REMOVE, PROTECT AND STORE (E) ROOF HATCH FOR REINSTALLATION
3. EXISTING TO REMAIN, (E)G
4. PROTECT HISTORIC ELEMENT
5. REMOVE ALL CLADDING MATERIALS AND CONCRETE BASE FROM (E) COLUMNS. LEAVE SURFACE ROUGH FOR NEW CLADDING.
6. REMOVE FRAMING
7. REMOVE FLOOR FINISH
8. CUT NEW OPENING. SEE STRUCTURAL
9. REMOVE CEILING MATERIAL AND LIGHTING
10. REMOVE EXISTING STOREFRONT AND CURB
11. REMOVE (E) WINDOW AND COVERING
12. REMOVE (E) RAMP
13. REMOVE STAIRS
14. REMOVE WINDOW ASSEMBLY AND CUT OPENING TO GRADE. SEE ELEVATIONS, A300 SERIES
15. REMOVE WINDOW ASSEMBLY. SEE ELEVATIONS, A300 SERIES
16. REMOVE WINDOW SASHES
17. REMOVE TOPPING SLAB
18. REMOVE ELEVATOR
19. REMOVE WALL AND GLAZED OPENINGS
20. REMOVE SLAB ON GRADE
21. NO WORK REQUIRED
22. REMOVE CONCRETE ROOF ASSEMBLY TO STRUCTURAL SLAB. DEMO ROOF DRAINS
23. REMOVE CONCRETE ROOFING ASSEMBLY, GUTTERS, AND PLASTER SOFFIT BELOW. REMOVE TO PRIMARY STRUCTURE. DEMOLISH LIGHTING
24. REMOVE ACCESS LADDER
25. REMOVE (E) ROOF ASSEMBLY MEMBRANE, INSULATION, ACCESSORY FLASHINGS, AND ROOF DRAINS
26. REMOVE ROOF AND STRUCTURE
27. SPALLING PAINT, FIBER PAINT AND SOME CRACKING AT CONCRETE CANOPY
28. REMOVE (E) ASPHALTIC WATERPROOFING MEMBRANE AT (E) CONCRETE CANOPY
29. REMOVE (E) ROOF ASSEMBLY, DEMO ROOF AND DOORHOUSE STRUCTURE TO PROVIDE ACCESS FOR NEW MECHANICAL EQUIPMENT
30. REMOVE, PROTECT AND STORE (E) STONE COPING FOR REINSTALLATION
31. REMOVE (E) MECHANICAL EQUIPMENT AND CURB, REF MECHANICAL
32. REMOVE AND SALVAGE EXISTING WOOD PANELS AND TRIM FOR REPLACEMENT
33. REMOVE ROOF DRAIN AT THIS LEVEL. REF PLUMBING
34. REMOVE (E) GREASE HOOD
35. REMOVE Mosaic TILE. PRESERVE (E) STONE SUBSTRATE
36. REMOVE (E) BOOKSHELVES AND SALVAGE FOR RE-INSTALLATION
37. REMOVE CATHWALL
38. REMOVE OPERABLE PARTITION, TRACK AND COVER DOORS
39. REMOVE (E) ROLL UP DOOR AND SALVAGE FOR RE-INSTALLATION
40. REMOVE (E) GUTTER AND DOWNSPOUT
41. REMOVE INTERIOR CONVECTOR PIPES CHASE BELOW GUTTER
42. ALIGN
43. PROTECT (E) LIMESTONE BASE. SALVAGE ANY REMOVED
44. REMOVE EXISTING DOORS AND FRAME STOPS, LEAVE TRIM
45. SAWCUT AND BACKFILL (E) CONCRETE FOR ELECTRICAL CONDUIT. ALIGN CUTS WITH (E) JOINTS
46. REMOVE PLASTER WRAP AT COLUMN HEAD
47. REMOVE (E) PLASTER FOR PLUMBING ACCESS AND ADDED BLOCKING
48. (E) COPING TO REMAIN IN PLACE
49. (E) FALL PROTECTION SYSTEM TO REMAIN IN PLACE
50. MAINTAIN FOOTINGS AS REQUIRED TO SUPPORT HISTORIC ENTRY ABOVE
51. REMOVE HISTORIC DOORS AND FRAMES. SALVAGE FOR OWNER
52. CUT NEW WALL OPENING ALIGNED ABOVE DOOR/WINDOW OPENING. SEE MEP DRAWINGS
53. REMOVE (E) DISPLAY CASE
54. REMOVE FLOORING WALL AND CONVECTOR UNITS
55. REMOVE PLATFORM AND LADDER. SALVAGE FOR REPLACEMENT OR REPLACE IN KIND
- 56.
- 57.
- 58.

DEMO RCP - LEVEL 1 MEZZANINE & MILLS CENTER

1/16" = 1'-0"



ARCHITECTURE  
URBAN DESIGN + PLANNING  
INTERIOR DESIGN

PORTLAND, OREGON 97209  
P: 503.445.7372  
F: 503.445.7395  
SERAPDX.COM



ERB MEMORIAL UNION - RENOVATION & ADDITION

PACKAGE 4

UNIVERSITY OF OREGON  
13TH AVENUE & UNIVERSITY STREET

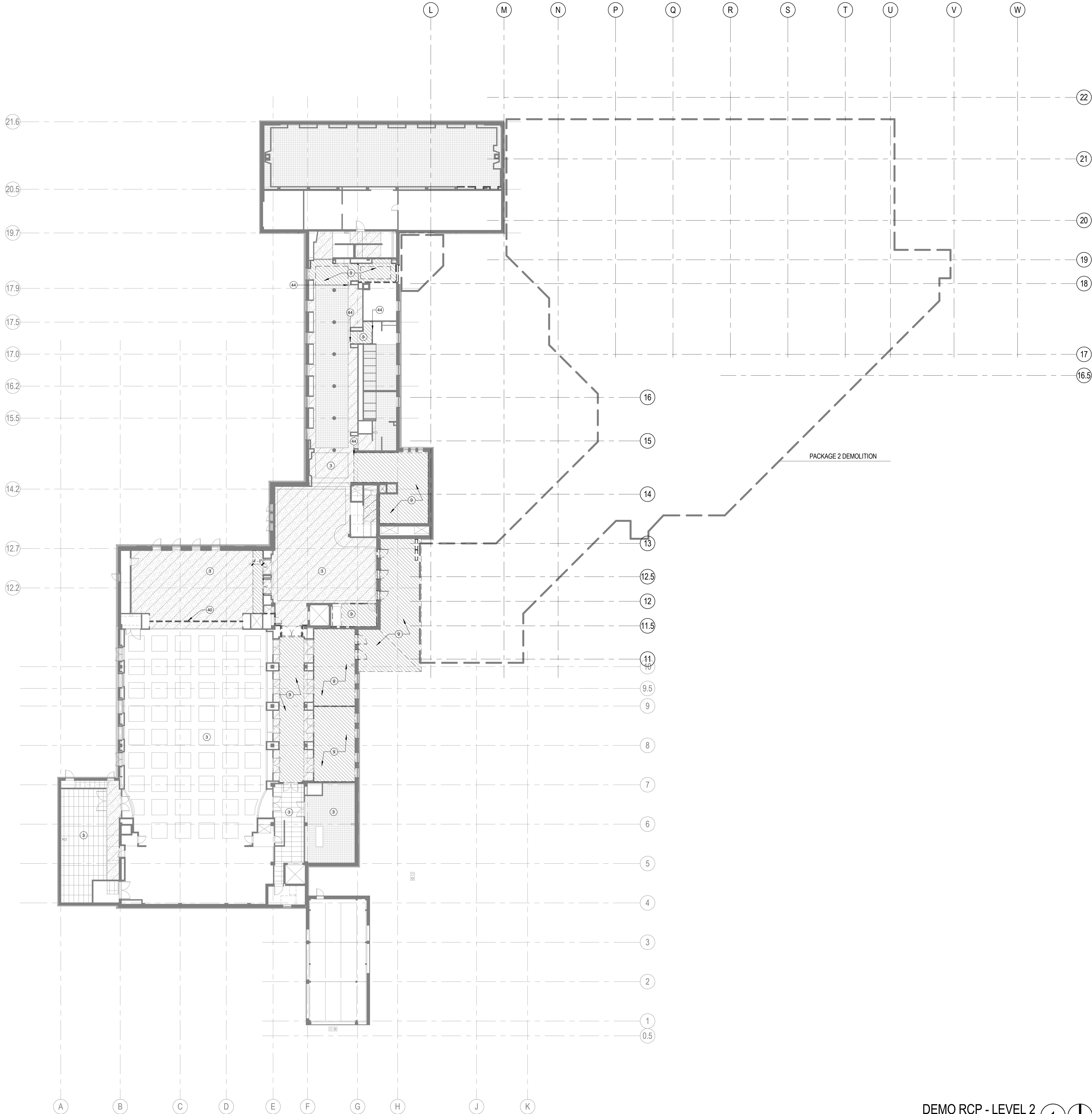
REVISIONS

CHECKED BY:  
ISSUE DATE: 2014.08.01  
PROJECT NO: 11045

DEMO RCP -  
LEVEL 1  
MEZZANINE /  
MILLS CENTER

DA201m

100% CONSTRUCTION DOCUMENTS



## GENERAL NOTES - DEMOLITION

- DEMOLITION PLAN KEYNOTES APPLY TO SHEETS D100-D200. ALL KEYNOTES MAY NOT OCCUR ON THIS SHEET AND DO NOT APPLY TO ANY OTHER SHEETS EXCEPT THOSE NOTED.
- GRIDS ARE FOR REFERENCE ONLY. CONTRACTOR TO SET CONTROL POINTS FOR LAYOUT.
- PACKAGE 4 DEMOLITION - SALVAGE ALL FEASIBLE MATERIALS FOR OFF-SITE REUSE OR RECYCLING. SEE DIVISION 1 SPECIFICATIONS. SALVAGE FOR ON-SITE REUSE: INTERIOR GLULAM RAILINGS, WOOD CEILING ELEMENTS, ROOF HATCH, STONE COPING, LIMESTONE BASE, AND BOOKSHELVES AS INDICATED IN DEMOLITION DRAWINGS.
- REFER TO A300 SERIES FOR DEMOLITION/SALVAGE SCOPE AT ELEVATIONS.
- REFER TO SLAB PLANS FOR NEW OPENINGS IN (E) SLAB/ROOFS.
- REFER TO DETAIL T1AB2 AND SPECIFICATIONS 05 15 00 1.04 FOR PENETRATIONS THROUGH CONCRETE SLAB OVER WOOD DECKING.
- DIMENSIONS FOR NEW OPENINGS ARE FOR REFERENCE ONLY. CONTRACTOR TO VERIFY REQUIRED DIMENSIONS WITH FINAL INSTALLATION REQUIREMENTS.

## LEGEND - DEMO RCP

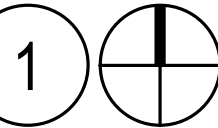
- EXISTING TO REMAIN
- DEMOLISH
- EXISTING 2'X2' SUSPENDED ACT
- EXISTING GYPSUM BOARD
- EXISTING EXPOSED CONCRETE
- EXISTING APPLIED ACT
- EXISTING APPLIED ACT

## KEYNOTES - DEMO PLANS

- CUT FLOOR OPENING
- REMOVE, PROTECT AND STORE (E) ROOF HATCH FOR REINSTALLATION
- EXISTING TO REMAIN UNIT
- PROTECT HISTORIC ELEMENT
- REMOVE ALL CLADDING MATERIALS AND CONCRETE BASE FROM (E) COLUMNS. LEAVE SURFACE ROUGH FOR NEW CLADDING
- REMOVE PAVING
- REMOVE FLOOR FINISH
- CUT NEW OPENING. SEE STRUCTURAL
- REMOVE CEILING MATERIAL AND LIGHTING
- REMOVE EXISTING STOREROOM AND CLIB
- REMOVE (E) WINDOW AND COVERING
- REMOVE (E) RAMP
- REMOVE STAIRS
- REMOVE WINDOW ASSEMBLY AND CUT OPENING TO GRADE. SEE ELEVATIONS, A300 SERIES
- REMOVE WINDOW ASSEMBLY. SEE ELEVATIONS, A300 SERIES
- REMOVE WINDOW SASHES
- REMOVE TOPPING SLAB
- REMOVE ELEVATOR
- REMOVE WALL AND GLAZED OPENINGS
- REMOVE SLAB ON GRADE
- NO WORK REQUIRED
- REMOVE CONCRETE ROOF ASSEMBLY TO STRUCTURAL SLAB. DEMO ROOF DRAINS
- REMOVE COPPER ROOFING ASSEMBLY, GUTTERS, AND PLASTER SOFFIT BELOW. REMOVE TO PRIMARY STRUCTURE. DEMOLISH LIGHTING
- REMOVE ACCESS LADDER
- REMOVE (E) ROOF ASSEMBLY MEMBRANE, INSULATION, ACCESSORY FLASHINGS, AND ROOF DRAINS
- REMOVE ROOF AND STRUCTURE
- SPALLING PAINT, FADED PAINT AND SOME CRACKING AT CONCRETE CANOPY
- REMOVE (E) ASPHALTIC WATERPROOFING MEMBRANE AT (E) CONCRETE CANOPY
- REMOVE (E) ROOF ASSEMBLY, DEMO ROOF AND DOCKHOUSE STRUCTURE TO PROVIDE ACCESS FOR NEW MECHANICAL EQUIPMENT
- REMOVE, PROTECT AND STORE (E) STONE COPING FOR REINSTALLATION
- REMOVE (E) MECHANICAL EQUIPMENT AND CURB, REF. MECHANICAL
- REMOVE AND SALVAGE EXISTING WOOD PANELS AND TRIM FOR REPLACEMENT
- REMOVE ROOF DRAIN AT THIS LEVEL, REF. PLUMBING
- REMOVE (E) GREASE HOOD
- REMOVE MOSAIC TILE. PRESERVE (E) STONE SUBSTRATE
- REMOVE (E) BOOKSHELVES AND SALVAGE FOR RE-INSTALLATION
- REMOVE CATWALK
- REMOVE OPERABLE PARTITION, TRACK AND COVER DOORS
- REMOVE (E) ROLL UP DOOR AND SALVAGE FOR RE-INSTALLATION
- REMOVE (E) GUTTER AND DOWNSPOUT
- REMOVE INTERIOR CONVECTOR PIPE CHASE BELOW GUTTER
- ALIGN
- PROTECT (E) LIMESTONE BASE. SALVAGE ANY REMOVED
- REMOVE EXISTING DOORS AND FRAME STOPS. LEAVE TRIM
- SAW/CUT AND BACKFILL (E) CONCRETE FOR ELECTRICAL CONDUIT. ALIGN CUTS WITH (E) JOINTS
- REMOVE PLASTER WRAP AT COLUMN/BEAM
- REMOVE (E) PLASTER FOR PLUMBING ACCESS AND ADDED BLOCKING
- (E) COPING TO REMAIN IN PLACE
- (E) FALL PROTECTION SYSTEM TO REMAIN IN PLACE
- MAINTAIN FOOTINGS AS REQUIRED TO SUPPORT HISTORIC ENTRY ABOVE
- REMOVE HISTORIC DOORS AND FRAMES. SALVAGE FOR OWNER
- CUT NEW WALL OPENING ALIGNED ABOVE DOOR/WINDOW OPENING. SEE MEP DRAWINGS
- REMOVE (E) DISPLAY CASE
- REMOVE FURRING WALL AND CONVECTOR UNITS
- REMOVE PLATFORM AND LADDER. SALVAGE FOR REPLACEMENT OR REPLACE IN KIND
- 

DEMO RCP - LEVEL 2

1/16" = 1'-0"



ARCHITECTURE  
URBAN DESIGN + PLANNING  
INTERIOR DESIGN

PORTLAND, OREGON 97209  
P: 503.445.7372  
F: 503.445.7395  
SERAPDX.COM



ERB MEMORIAL UNION - RENOVATION & ADDITION

PACKAGE 4

UNIVERSITY OF OREGON  
13TH AVENUE & UNIVERSITY STREET

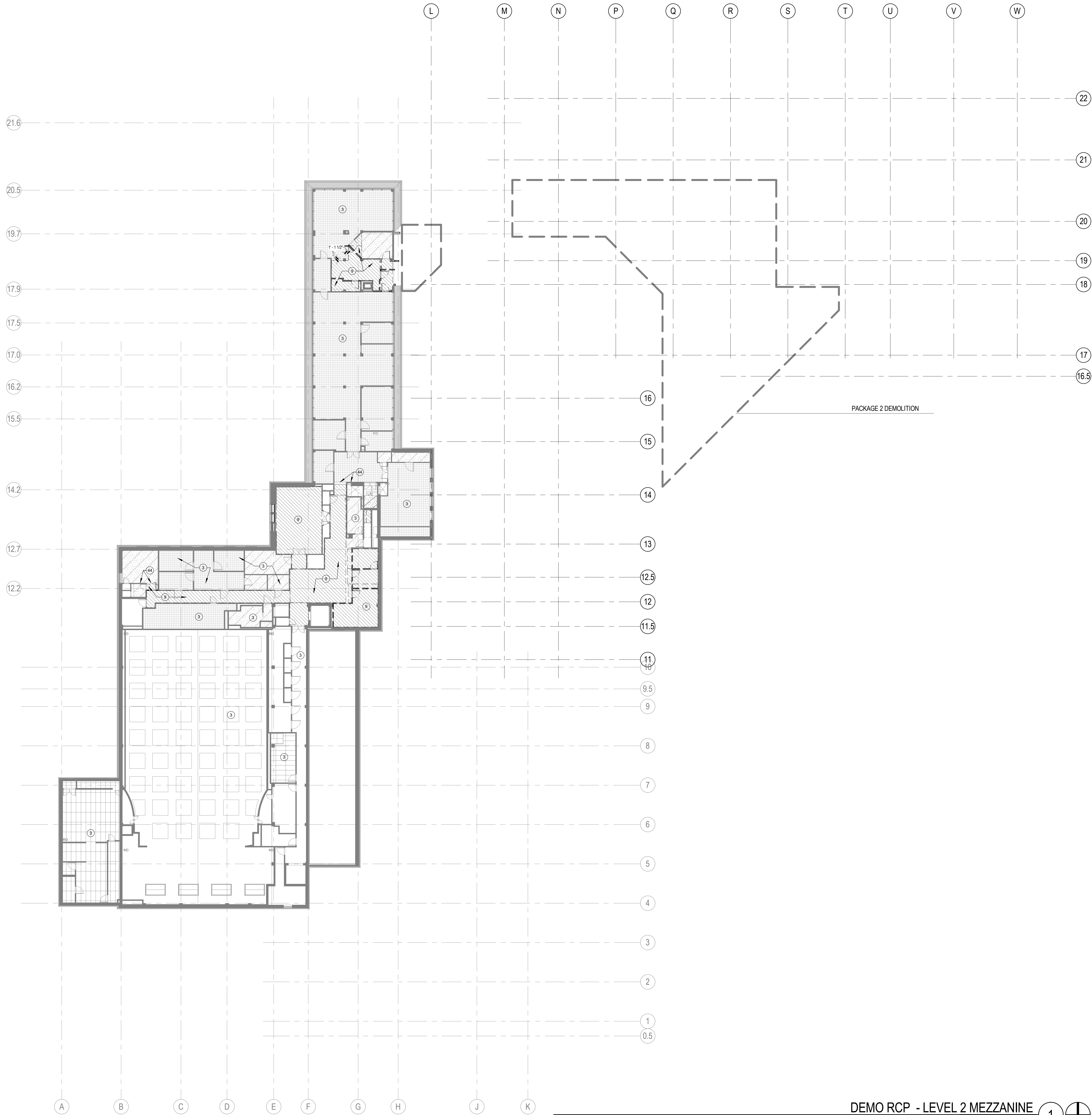
REVISIONS

CHECKED BY:  
ISSUE DATE: 2014.08.01  
PROJECT NO: 11045

DEMO RCP -  
LEVEL 2

DA202

100% CONSTRUCTION DOCUMENTS



GENERAL NOTES - DEMOLITION

- A. DEMOLITION PLAN KEYNOTES APPLY TO SHEETS D100-D200. ALL KEYNOTES MAY NOT OCCUR ON THIS SHEET AND DO NOT APPLY TO ANY OTHER SHEETS EXCEPT THOSE NOTED.
- B. GRIDS ARE FOR REFERENCE ONLY. CONTRACTOR TO SET CONTROL POINTS FOR LAYOUT.
- C. PACKAGE 4 DEMOLITION - SALVAGE ALL FEASIBLE MATERIALS FOR OFF-SITE REUSE OR RECYCLING. SEE DIVISION 1 SPECIFICATIONS. SALVAGE FOR ON-SITE REUSE: INTERIOR GLULAM RAILINGS, WOOD CEILING ELEMENTS, ROOF HATCH, STONE COPING, LIMESTONE BASE, AND BOOKSHELVES AS INDICATED IN DEMOLITION DRAWINGS.
- D. REFER TO A320 SERIES FOR DEMOLITION/SALVAGE SCOPE AT ELEVATIONS.
- E. REFER TO SLAB PLANS FOR NEW OPENINGS IN (E) SLABROOFS.
- F. REFER TO DETAIL TAB82 AND SPECIFICATIONS 06 15 00 1.04 FOR PENETRATIONS THROUGH CONCRETE SLAB OVER WOOD DECKING.
- G. DIMENSIONS FOR NEW OPENINGS ARE FOR REFERENCE ONLY. CONTRACTOR TO VERIFY REQUIRED DIMENSIONS WITH FINAL INSTALLATION REQUIREMENTS.

LEGEND - DEMO RCP

- EXISTING TO REMAIN
- DEMOLISH
- EXISTING 2'X2' SUSPENDED ACT
- EXISTING GYPSUM BOARD
- EXISTING EXPOSED CONCRETE
- EXISTING APPLIED ACT
- EXISTING APPLIED ACT

KEYNOTES - DEMO PLANS

- 1 CUT FLOOR OPENING
- 2 REMOVE, PROTECT AND STORE (E) ROOF HATCH FOR REINSTALLATION
- 3 EXISTING TO REMAIN, LINO
- 4 PROTECT HISTORIC ELEMENT
- 5 REMOVE ALL CLADDING MATERIALS AND CONCRETE BASE FROM (E) COLUMNS. LEAVE SURFACE ROUGH FOR NEW CLADDING
- 6 REMOVE PAVING
- 7 REMOVE FLOOR FINISH
- 8 CUT NEW OPENING. SEE STRUCTURAL
- 9 REMOVE CEILING MATERIAL AND LIGHTING
- 10 REMOVE EXISTING STOREFRONT AND CURB
- 11 REMOVE (E) WINDOW AND COVERING
- 12 REMOVE (E) RAMP
- 13 REMOVE STAIRS
- 14 REMOVE WINDOW ASSEMBLY AND CUT OPENING TO GRADE. SEE ELEVATIONS, A320 SERIES
- 15 REMOVE WINDOW ASSEMBLY. SEE ELEVATIONS, A320 SERIES
- 16 REMOVE WINDOW SASHES
- 17 REMOVE TOPPING SLAB
- 18 REMOVE ELEVATOR
- 19 REMOVE WALL AND GLAZED OPENING(S)
- 20 REMOVE SLAB ON GRADE
- 21 NO WORK REQUIRED
- 22 REMOVE CONCRETE ROOF ASSEMBLY TO STRUCTURAL SLAB. DEMO ROOF DRAINS
- 23 REMOVE COPPER ROOFING ASSEMBLY, GUTTERS, AND PLASTER SOFFIT BELOW. REMOVE TO PRIMARY STRUCTURE. DEMOLISH LIGHTING
- 24 REMOVE ACCESS LADDER
- 25 REMOVE (E) ROOF ASSEMBLY (MEMBRANE, INSULATION, ACCESSORY FLASHINGS, AND ROOF DRAINS
- 26 REMOVE ROOF AND STRUCTURE
- 27 SPALLING PAINT, FILL PAINT AND SOME CRACKING AT CONCRETE CANOPY
- 28 REMOVE (E) ASPHALTIC WATERPROOFING MEMBRANE AT (E) CONCRETE CANOPY
- 29 REMOVE (E) ROOF ASSEMBLY, DEMO ROOF AND DOGHOUSE STRUCTURE TO PROVIDE ACCESS FOR NEW MECHANICAL EQUIPMENT
- 30 REMOVE, PROTECT AND STORE (E) STONE COPING FOR REINSTALLATION
- 31 REMOVE (E) MECHANICAL EQUIPMENT AND CURB. REF MECHANICAL
- 32 REMOVE AND SALVAGE EXISTING WOOD PANELS AND TRIM FOR REPLACEMENT
- 33 REMOVE ROOF DRAIN AT THIS LEVEL. REF PLUMBING
- 34 REMOVE (E) GREASE HOOD
- 35 REMOVE MOSAIC TILE. PRESERVE (E) STONE SUBSTRATE
- 36 REMOVE (E) BOOKSHELVES AND SALVAGE FOR RE-INSTALLATION
- 37 REMOVE CATHWALK
- 38 REMOVE OPERABLE PARTITION, TRACK AND COVER DOORS
- 39 REMOVE (E) ROLL-UP DOOR AND SALVAGE FOR RE-INSTALLATION
- 40 REMOVE (E) GUTTER AND DOWNSPOUT
- 41 REMOVE INTERIOR CONNECTOR PIPE CHASE BELOW GUTTER
- 42 ALIGN
- 43 PROTECT (E) LIMESTONE BASE. SALVAGE ANY REMOVED
- 44 REMOVE EXISTING DOORS AND FRAME STOPS. LEAVE TRIM
- 45 SAWCUT AND BACKFILL (E) CONCRETE FOR ELECTRICAL CONDUIT. ALIGN CUTS WITH (E) JOINTS
- 46 REMOVE PLASTER WRAP AT COLUMN/BEAM
- 47 REMOVE (E) PLASTER FOR PLUMBING ACCESS AND ADDED BLOCKING
- 48 (E) COPING TO REMAIN IN PLACE
- 49 (E) FALL PROTECTION SYSTEM TO REMAIN IN PLACE
- 50 MAINTAIN FOOTINGS AS REQUIRED TO SUPPORT HISTORIC ENTRY ABOVE
- 51 REMOVE HISTORIC DOORS AND FRAMES. SALVAGE FOR OWNER
- 52 REMOVE (E) DISPLAY CASE
- 53 REMOVE FLOORING WALL AND CONNECTOR UNITS
- 54 REMOVE PLATFORM AND LADDER. SALVAGE FOR REPLACEMENT OR REPLACE IN KIND
- 55
- 56
- 57
- 58



ARCHITECTURE  
URBAN DESIGN + PLANNING  
INTERIOR DESIGN

PORTLAND, OREGON 97209  
P: 503.445.7372  
F: 503.445.7395  
SERAPDX.COM



ERB MEMORIAL UNION - RENOVATION & ADDITION  
PACKAGE 4

UNIVERSITY OF OREGON  
13TH AVENUE & UNIVERSITY STREET

REVISIONS

CHECKED BY:  
ISSUE DATE: 2014.08.01  
PROJECT NO: 11045

DEMO RCP -  
LEVEL 3

DA203

100% CONSTRUCTION DOCUMENTS